

OREGON CORNER RESTORATION FORM

Section 34 Township 6N Range 34E
 County Umatilla Date: April 26, 2003

Corner Designation: 6N34Z17

Corner to sections 34 and 35, T6N, R34E, and sections 2 and 3, T5N, R34E, W.M., Umatilla County, Oregon.

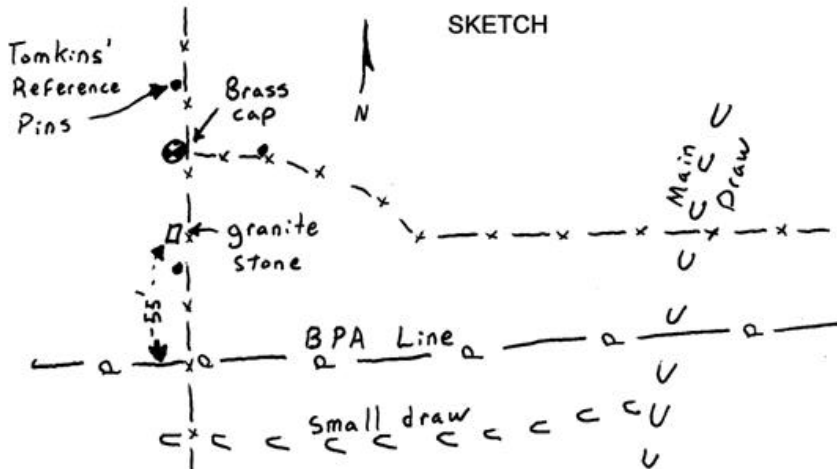
Condition Report Only
 Not found
 Remonumented
 Unrecorded
 Surveyed in
 Referenced out

Previous Renewals / Surveys, etc.

Corner originally set by Wm. H. Odell and Wm. S. Lewis under contract No. 110 dated February 7th, 1865. Their record reads: Set post Cor. for Secs. 2,3, 34, and 35. Drove charred stake dug, pits and raised mound as per instructions. Macomber in the survey in Book 1, Page 464 calls for a stone. Bradley in the survey in Book 2, Page 276 calls for a granite stone. BPA mile map serial No. 9614 dated 9-27-40 calls for "rock with x". Under survey 97-46-A, Streamer calls a 3/4" iron pipe in fence corner. Under survey 03-23-C, Paul Tomkins set a brass cap at the fence corner.

Monument and Accessories found: (condition and source)

At record distance north of the BPA power line I found a 6" x 10" x 15+" granite stone with an x on top, 18" west of the north - south fence and 20" below the surface of a plowed field. I did not dig the stone entirely out to avoid disturbing it. The remains of a wooden post were along the south side of the stone. The brass cap by Tomkins bears N9°46'22"E, 5.21 feet.



MONUMENT (S) AND ACCESSORIES SET (Procedures and Description)
 I left the stone undisturbed.

For references:

- The brass cap by Tomkins bears N9°46'22"E, 5.21 feet;
- an iron rebar by Tomkins bears N4°22'12"E, 15.17 feet;
- an iron rebar by Tomkins bears N65°51'29"E, 11.82 feet;
- an iron rebar by Tomkins bears S6°04'45"E, 4.85 feet;

The monument and references were tied using a LIECA system 300 RTK GPS.

Location and comments
 NAD83-91 coordinates by a single
 GPS tie to Tri Station GEER.
 N 837623.28
 E 8701018.60

Compass Declination

Surveyors Seal

RECEIVED BY:
 Umatilla County Surveyor
 Date: 10-03
 Rec'd By: KK
 No. 03-314-C

Firm / Agency
 Witness Tree Surveying
 Address
 P.O. Box G
 Pilot Rock, Or. 97868
 Party Chief
 Stephen K, Haddock

REGISTERED
 PROFESSIONAL
 LAND SURVEYOR

Stephen K. Haddock

OREGON
 JULY 9, 2001
 STEPHEN K. HADDOCK
 56295LS

RENEWAL DATE 6-30-05