

**OREGON CORNER RESTORATION FORM**

Section 8 Township 5N Range 34E  
 County Umatilla Date: June 12, 2003

Corner Designation: 5N34G7

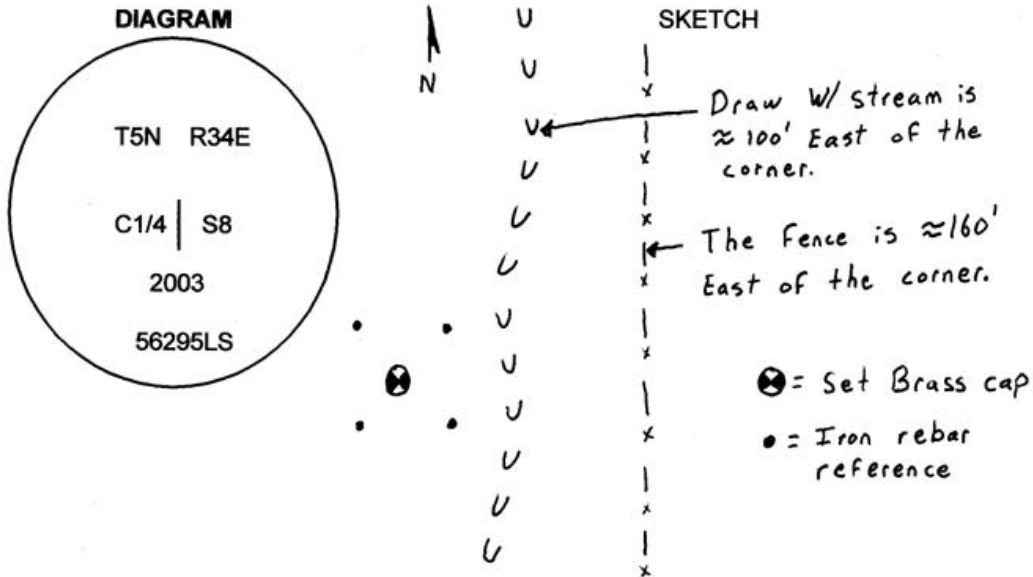
Center quarter corner to section 8, T5N, R34E,  
 W.M., Umatilla County, Oregon.

Condition Report Only  
 Not found  
x Remonumented  
 Unrecorded  
 Surveyed in  
x Referenced out

Previous Renewals / Surveys, etc.

A monument for this corner was first established by Aubrey Perry in the survey recorded in Book 2 Page 310 of the Record of Private Surveys. His record calls "drive stake and make stone mound for center of section."

Monument and Accessories found: ( condition and source )  
 None.



**MONUMENT (S) AND ACCESSORIES SET (Procedures and Description)**

I set a 1 1/2" x 30" galvanized iron pipe with a 2 1/4" brass cap stamped as shown in the diagram above at the computed position of the center 1/4.

For references, I set four 5/8" by 24" iron rebars with 1 1/8" orange plastic caps stamped WTS and 56295LS as described below:

- a rebar bears N52°55'27"W, 23.90 feet;
- a rebar bears N23°56'06"E, 27.96 feet;
- a rebar bears S56°25'14"E, 22.33 feet;
- a rebar bears S27°19'15"W, 23.30 feet;

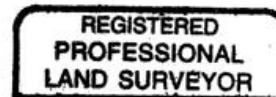
The monument and references were tied using a LIECA system 300 RTK GPS.

Location and comments  
 NAD 83-91 coordinates from a single  
 GPS tie to tri station GEER.

N 829500.57  
 E 8687925.05  
**RECEIVED BY:**  
Umatilla County Surveyor  
 Date: 10-03  
 Rec'd By: KK  
 No. 03-313-C

Compass Declination  
 Firm / Agency  
 Witness Tree Surveying  
 Address  
 P.O. Box G  
 Pilot Rock, Or. 97868  
 Party Chief  
 Stephen K, Haddock

Surveyors Seal



*Stephen K. Haddock*



RENEWAL DATE 6-30-05