

OREGON CORNER RESTORATION FORM

Section 11 Township 5N Range 34E
 County Umatilla Date: April 15, 2003

Corner Designation: 5N34J21

Corner to sections 11, 12, 13, and 14, T5N, R34E,
 W.M., Umatilla County, Oregon.

Condition Report Only
 Not found
x Remonumented
 Unrecorded
 Surveyed in
x Referenced out

State Plane Coordinates, Oregon North, 83(1991) based on a
 single GPS tie to Tri Station GEER, N = 827154.44 E = 8706815.04

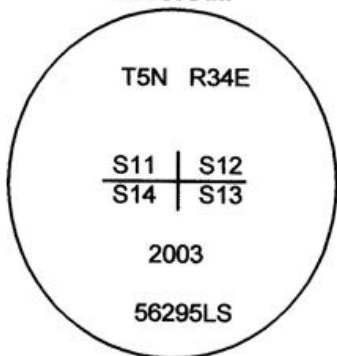
Previous Renewals / Surveys, etc.

Corner originally set by Wm. H. Odell & Wm. S. Lewis under contract No. 110 dated February
 7th, 1865. Their record reads: Set post Cor. for Secs. 11, 12, 13, & 14. on side hill facing W., Drove
 charred stake; dug pits and raised mound, as per instructions.

Monument and Accessories found: (condition and source)

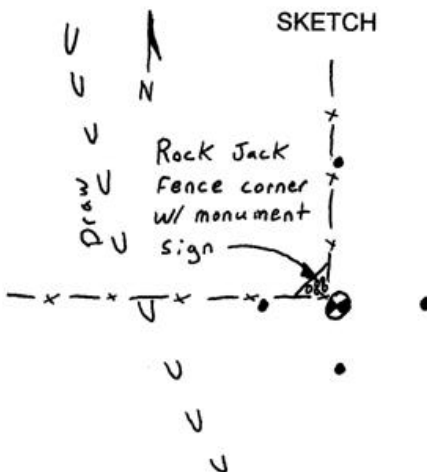
A fence corner with fences running North and West. There is evidence that this location has been
 the long term possessory location.

DIAGRAM



⊗ = 1" Iron rebar
 ● = Iron rebar
 reference

SKETCH



MONUMENT (S) AND ACCESSORIES SET (Procedures and Description)

I set a 1" x 24" iron rebar with a 2" aluminum cap stamped as shown in the diagram above at the
 fence corner. I attached a County Monument sign to the fence corner post.

For references, I set four, 5/8" by 24" green coated iron rebars with 1.25" orange plastic caps
 stamped WTS and 56295LS as described below:

- a rebar bears N8°02'27"E, 40.00 feet;
- a rebar bears N85°12'43"E, 70.77 feet;
- a rebar bears S13°24'27"W, 27.35 feet;
- a rebar bears S86°47'39"W, 19.20 feet;

The monument and references were tied using a LIECA system 300 RTK GPS.

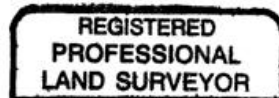
Location and comments

Compass Declination

Surveyors Seal

RECEIVED BY:
Umatilla County Surveyor
 Date: 10-03
 Rec'd By: KK
 No. 03-314-C

Firm / Agency
 Witness Tree Surveying
 Address
 P.O. Box G
 Pilot Rock, Or. 97868
 Party Chief
 Stephen K, Haddock



Stephen K. Haddock

