

# OREGON CORNER RESTORATION FORM

**Section:** 34  
**Township:** 6 North  
**Range:** 35 East of the Willamette Meridian  
**County:** Umatilla  
**Date:** June 28, 2002

**Corner Indexing Information:** Township 6N Range 35E Corner Code Z 15 (Willamette Meridian)

**Additional Identifier:** (e.g. BLM designation for the corner, street intersection, plat name, block, lot, etc.)

This quarter corner is common to: Section 3, T5N and Section 34, T6N, Range 35 East

**Oregon Plane Coordinates:** N: 838329.366 E: 8730200.045

**Zone:** North **Order:** second **Datum:** NAD83-91 **Convergence:** **Scale Factor:**

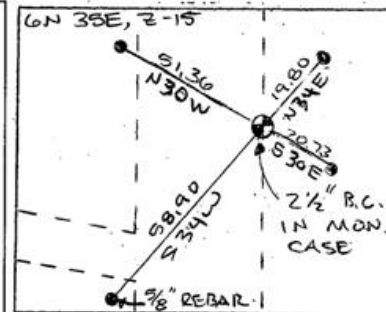
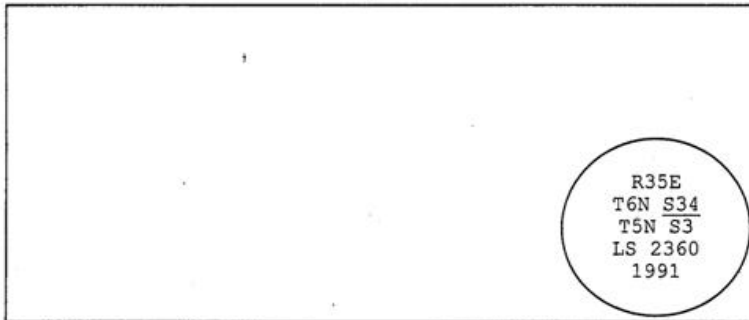
**Previous Renewals/Surveys, etc.:** Originally surveyed by U.S. Deputy Surveyor William Odell under his contract No. 110 dated 8-23-1865. The Surveyor General's notes state "set post 1/4 Section corner. Drove charred stake and raised mound of stones". In 1991, County survey No. 91-81-B, Tomkins set a brass cap at the surveyed position as described on LCR 91-81-B.

**Monument(s) & Accessories Found (Condition & Source):**

At the south corner of section 34, T6N R35E, we found a 2 1/2" brass cap in aluminum/pvc monument case with lid 3" below the surface pavement.

**Monument Set (Procedures & Description):**

**Monument Detail:**



**New Accessories: WE SET:**

A 5/8 rebar with yellow plastic cap stamped 'Tomkins Surveying' which bears N 34°E ~ 19.80 from the corner. No Umatilla County Bearing object sign or t-post set. A 5/8 rebar with yellow plastic cap stamped 'Tomkins Surveying' which bears S 30°E ~ 20.73 feet from the corner. No Umatilla County Bearing object sign or t-post set. A 5/8 rebar with yellow plastic cap stamped 'Tomkins Surveying' which bears S 34°W ~ 58.90 feet from the corner. Attached a Umatilla County Bearing object sign to the northeast face of power pole. A 5/8 rebar with yellow plastic cap stamped 'Tomkins Surveying' which bears N 30°W ~ 51.36 feet from the corner. Attached a Umatilla County Bearing object sign to the southeast face of power pole.

**Location & Comments:**

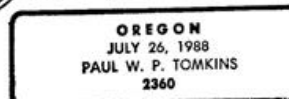
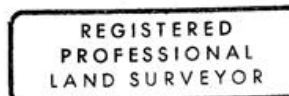
**Compass Declination:**

19° East

**Firm/Agency:** Tomkins Land Surveying, Inc.  
 20 E. Poplar, Suite 204  
 Walla Walla, WA 99362

**Party Chief:** Bryan Martin  
**Notes:** Bryan Martin  
**Witness:** Eric Flowers

**Surveyor's Seal**



*renewed 6/30/04*  
*6/30/02*