

OREGON CORNER RESTORATION FORM

Section: 35
Township: 6 North
Range: 35 East of the Willamette Meridian
County: Umatilla
Date: June 28, 2002

Corner Indexing Information: Township 6N Range 35E Corner Code Z 19 (Willamette Meridian)
Additional Identifier: (e.g. BLM designation for the corner, street intersection, plat name, block, lot, etc.)

This quarter corner is common to: Section 35 T6N and Section 2 T5N, R35E

Oregon Plane Coordinates: N: 838486.060 E: 8735504.852

Zone: North Order: second Datum: NAD83-91 Convergence: Scale Factor:

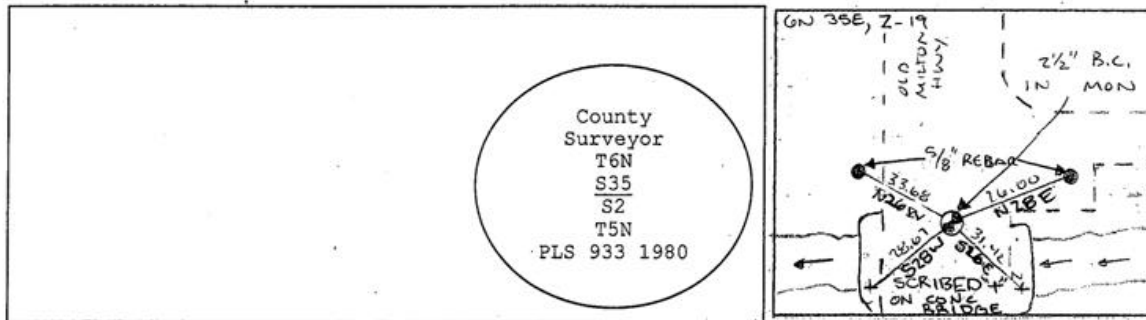
Previous Renewals/Surveys, etc.: Originally surveyed by U.S. Deputy Surveyor William Odell under his contract No. 110, dated 8-23-1865. The Surveyor General's notes state, "set post quarter section corner, drove charred stake, dug pits, and raised mounds as per instructions." In 1965, County survey No. A-41-AX, Thompson found a 1/2" iron pin of unknown origin. In 1974, county survey No. I-198-A, Harris found a 5/8" iron rod. In 1980, county survey No. S-157-C, Krumbein found a 5/8" iron pin and set a brass cap. Circa 1995, the Oregon Department of Transportation resurfaced the road and set a monument case over Krumbein's brass cap.

Monument(s) & Accessories Found (Condition & Source):

At the south quarter corner of section 35, T6N R35E, we found a 2 1/2" brass cap in 5" diameter iron monument case 5" below the surface pavement.

Monument Set (Procedures & Description):

Monument Detail:



New Accessories: WE SET:

A 5/8 rebar with yellow plastic cap stamped 'Tomkins Surveying' which bears N 28°E ~ 26.00 feet from the corner in the pavement. Scribbed a "+" on the concrete bridge deck S 26°E ~ 31.42 feet from the corner. Scribbed a "+" on the concrete bridge deck S 28°W ~ 28.67 feet from the corner. A 5/8 rebar with yellow plastic cap stamped 'Tomkins Surveying' which bears N 26°W ~ 33.68 feet from the corner. No Umatilla County Bearing object sign or t-post set.

Location & Comments:

Compass Declination:

19° East

Firm/Agency: Tomkins Land Surveying, Inc.
20 E. Poplar, Suite 204
Walla Walla, WA 99362

Party Chief: Bryan Martin
Notes: Bryan Martin
Witness: Eric Flowers

Surveyor's Seal



RENEW 6/30/07
6/30/02