

PAUL W.P. TOMKINS, LAND SURVEYOR  
 LAND CORNER RECORD UMATILLA County

T 05N, R 36E., W.M.  
 Segregated Surveys:

Corner Code No. N-01

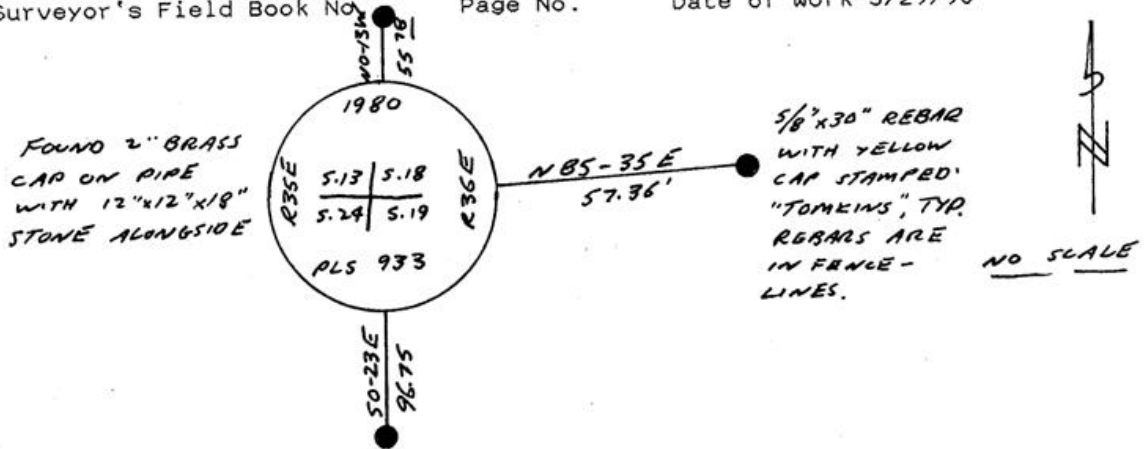
Name: SOUTHWEST CORNER SECTION 18  
 Reserve, Townsite

Corner No.:  
 DLC, HES, Tract, Mining Claim, Indian Allotment, Federal

1. History of Corner Establishment and Subsequent Restoration:  
 CORNER WAS ORIGINALLY ESTABLISHED BY ODELL & LEWIS IN 1865 UNDER CONTRACT NO. 110 AS "A POST ON STEEP HILLSIDE FACING EAST, DROVE CHARRED STAKE, DUG PITS AND RAISED MOUND." CRIGER, IN 1953, (SEE SURVEY Q-1039) DESCRIBES THE CORNER AS A "ROCK." KRUMBEIN, IN 1982 (SURVEY 82-25B), SHOWS CORNER AS "BRASS CAP SET IN 1980 BY THE UMATILLA CO. SURVEYOR."

2. Description of Evidence Found:  
 FOUND A 2" BRASS CAP ON A PIPE AT A FENCE CORNER ON AN EAST FACING HILLSIDE WITH A 12"X12"X18" BASALT STONE ALONGSIDE, NO MARKINGS DISTINGUISHABLE.

3. Describe Monument, Accessories, and Corollary Data to Perpetuate this Corner Location. Diagram corner, indicate meridian and reference to map of Record. Surveyor's Field Book No. Page No. Date of Work 3/29/90



Oregon Plane Coordinates: North Zone, Y  
 Order Accuracy. Derived From:

Pin Pointed on Photo No. Date Located at

SURVEYOR'S CERTIFICATE

This corner record correctly represents work performed by me or under my direction in compliance with the provisions of the laws of the State of Oregon.

Date 12/2/90

Paul W.P. Tomkins  
 Signature

REGISTERED  
 PROFESSIONAL  
 LAND SURVEYOR

Paul W.P. Tomkins

OREGON  
 JULY 26, 1988  
 PAUL W. P. TOMKINS  
 2360

Certificate No. 2360

AUDITOR'S CERTIFICATE

Filed for record this ... day of ..., 19... at ... M. in  
 Book ... of ... RECEIVED BY .. at Page ... at the request of

Umatilla County Surveyor

Date 10-9/

County Auditor

Rec'd By LR

No. 9165-B