

OREGON CORNER RESTORATION FORM

COUNTY: Umatilla DATE: 01/27/05

CORNER DESIGNATION: 5N35, Z-9, The Southeast Corner of Section 32.

PREVIOUS RENEWALS/SURVEYS ETC.:

Corner originally established by Odell & Lewis, under GLO Contract No. 110, dated February 7, 1865. Notes state: Set post Standard Cor. for Secs. 32 & 33 on level; drove charred stake; dug pits; and raised mound, as per instructions.

Peter Zahner, in unnumbered survey in Record of Private Surveys, Book 1, pages 133 & 134, in 1885, recovers this corner in the center of an East-West road and remonuments with a 4 x 8 x 17" stone with a "Warners Safe Cure" bottle underneath it.

MONUMENT AND ACCESSORIES FOUND: None.

MONUMENT MARKING DETAIL:

SC
T5N R35E
S32 | S33
2005
PLS 1106

MONUMENT SET:

I re-established this corner by single proportion measurement between the Southwest corner of Section 31 and the Standard South one-quarter corner of Section 33, holding the centerline of the existing East-West road at this point for latitude. See Survey No. 02-021-C for additional information. At re-established corner point, set a 2 1/2" brass cap on a 1 1/4" by 30" galvanized iron pipe with cap 12" below road surface, marked as shown in Monument Marking Detail.

New accessories:

A 5/8" x 30" iron rebar with a 1 1/4" yellow plastic cap stamped "OR PLS 1106, WA PLS 17372" set flush with ground bears North 75° East, 39.5 feet.

A 5/8" x 30" iron rebar with a 1 1/4" yellow plastic cap stamped "OR PLS 1106, WA PLS 17372" set flush with ground bears South 71° East, 46.5 feet.

A 5/8" x 30" iron rebar with a 1 1/4" yellow plastic cap stamped "OR PLS 1106, WA PLS 17372" set flush with ground bears South 65° West, 36.4 feet.

A 5/8" x 30" iron rebar with a 1 1/4" yellow plastic cap stamped "OR PLS 1106, WA PLS 17372" set flush with ground bears North 73° West, 33.9 feet.

Attached bearing object signs to all rebar accessories. Set steel fence post with "witness" sign, 1 foot from Southwest quadrant rebar accessory.

LOCATION AND COMMENTS: Corner is located in Watts Road.

OREGON STATE PLANE COORDINATE, North Zone, NAD 83(91), International Feet:

N = 806408.15
E = 8723229.90

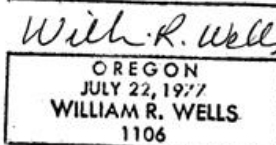
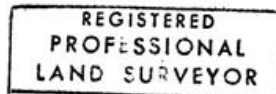
FIRM: William R. Wells, PLS
P.O. Box 1696
Pendleton, OR 97801

COMPASS DECLINATION: 18° East

Surveyor's Seal

Witnesses: Jason Wells, LSIT
Brian Cole

/5N35Z09



Renews 6/30/06

05-112-C