

**OREGON CORNER RESTORATION FORM**

Section 10 Township 5N Range 36E  
 County Umatilla Date: May 25, 2012

Corner Designation: 5N36E13

Condition Report Only  
 Not found

x Remonumented

Unrecorded

Surveyed in

x Referenced out

Corner common to sections 3, 4, 9, and 10,  
 T5N, R36E, W.M., Umatilla County, Oregon.

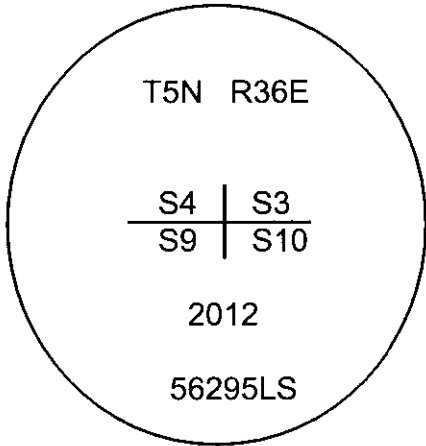
Previous Renewals / Surveys, etc.

Corner was originally set by Odell and Lewis under contract No. 110 dated February 7, 1865. Their record reads: Set post corner for secs. 3, 4, 9 and 10. Drove charred stake, dug pits, raised mound, as per instructions. In the record of Private Surveys Book 1, Page 393 (survey No. 100) John Kimbrell proportioned a point using the notes of Peter Zahner and set a stone 24 x 8 x 8 inches.

Monument and Accessories found: ( condition and source )

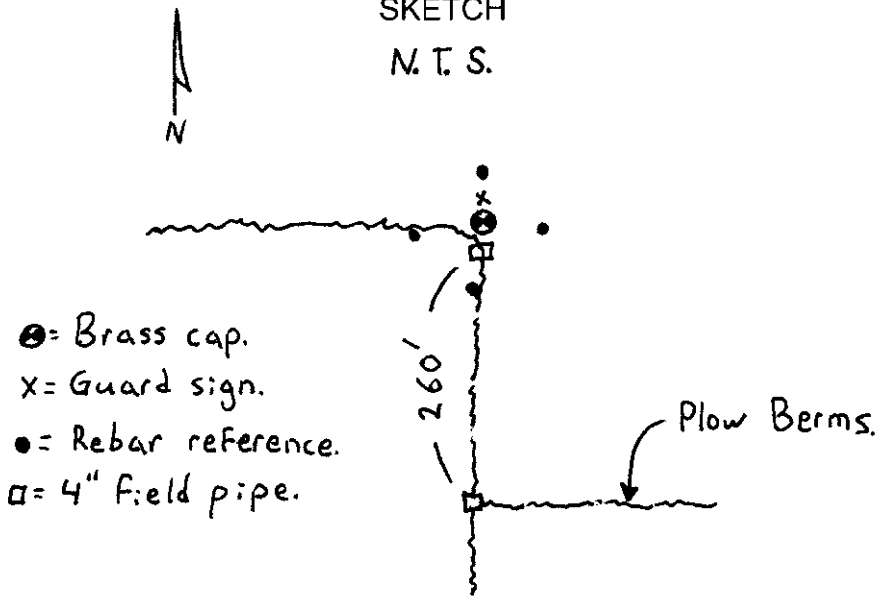
A stone, 8 x 8 x 6 inches at the base of a 4" x 82" galvanized iron pipe at the intersection of plow berms running south and west.

**DIAGRAM**



**SKETCH**

M. T. S.



**MONUMENT (S) AND ACCESSORIES SET (Procedures and Description)**

I set a 2 3/8" brass cap on a 1 1/2"x30" galvanized iron pipe with a brass cap stamped as shown in the diagram above at the position of the stone and moved the 4" pipe 1 foot south. I buried stone along side the pipe and set a steel guard post with a monument sign just north of the cap.

For references: I set 4, 5/8"x24" iron rebars with orange plastic caps stamped WTS and 56295LS as described below 24 inches below the surface of the ground:

- An iron rebar bears N1°39'11"E, 31.52 feet;
- An iron rebar bears S89°49'19"E, 26.26 feet;
- An iron rebar bears S04°56'38"E, 25.61 feet;
- An iron rebar bears N88°53'24"W, 25.31 feet;

The monument and references were tied using a Trimble R7/R8 RTK GPS system.

Location and comments  
 NAD 83/1991 State Plane Coordinate  
 Oregon North Zone  
 N = 833787.87 ift  
 E = 8759139.66 ift

Compass Declination

Surveyors Seal

RECEIVED BY:  
Umatilla County Surveyor  
 Date: 6/5/2012  
 Rec'd By: S. Res  
 No. 12-088-C

Firm / Agency  
 Witness Tree Surveying  
 Address  
 P.O. Box G  
 Pilot Rock, Or. 97868  
 Party Chief  
 Stephen K, Haddock

**REGISTERED  
 PROFESSIONAL  
 LAND SURVEYOR**

*Stephen K. Haddock*

**OREGON  
 JULY 9, 2001  
 STEPHEN K. HADDOCK  
 56295LS**

**RENEWAL DATE 6-30-13**