

T 05N, R 36E., W.M.

Corner Code No. J-3

Segregated Surveys:

Corner No.:

Name: NORTH 1/4 CORNER SECTION 18

DLC, HES, Tract, Mining Claim, Indian Allotment, Federal

Reserve, Townsite

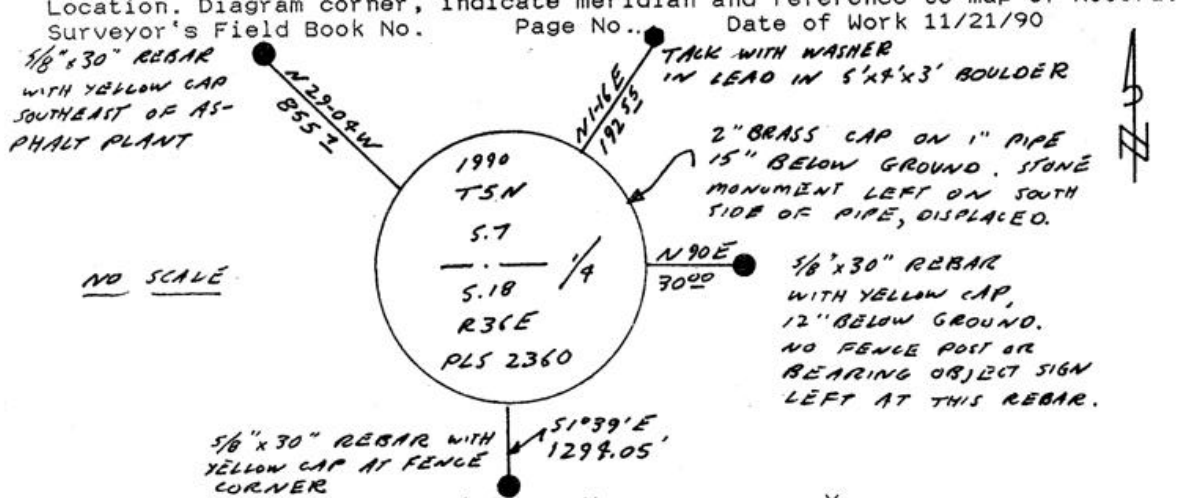
1. History of Corner Establishment and Subsequent Restoration:

CORNER ORIGINALLY ESTABLISHED BY ODELL & LEWIS IN 1865 UNDER CONTRACT NO. 110 AS "A 1/4 SEC. POST, DROVE CHARRED STAKE, DUG PITS & RAISED MOUND." THERE ARE NO SUBSEQUENT RECORDS FOR THIS CORNER IN THE OFFICE OF THE COUNTY SURVEYOR.

2. Description of Evidence Found:

FOUND 8"X10"X21" BASALT STONE, FIRMLY PLANTED, 15" BELOW GROUND. A ROTTED 6" DIAMETER POST WAS FOUND ON THE SOUTH SIDE OF THE STONE. STONE FALLS AT APPROXIMATE INTERSECTION OF EAST-WEST AND NORTH-SOUTH TILLAGE LINES.

3. Describe Monument, Accessories, and Corollary Data to Perpetuate this Corner Location. Diagram corner, indicate meridian and reference to map of Record.



Oregon Plane Coordinates: North Zone, Y
 Order Accuracy. Derived From:

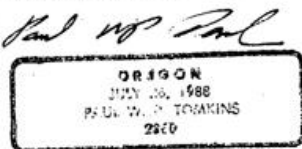
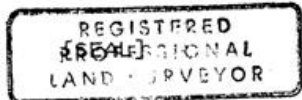
Pin Pointed on Photo No. Date Located at

SURVEYOR'S CERTIFICATE

This corner record correctly represents work performed by me or under my direction in compliance with the provisions of the laws of the State of Oregon.

Date 12/02/00

Signature Paul W.P. Tomkins



Certificate No. 2360

AUDITOR'S CERTIFICATE

Filed for record this ... day of ..., 19... at ... M. in Book ... of ... at Page ... at the request of

RECEIVED BY

County Auditor Umatilla County Surveyor
 Date 10-91
 Rec'd By KR
 No. 91-65-B