

USDA-FOREST SERVICE

Index File No. E-21  
 T 5S R. 30E  
 Merid. WILLAMETTE

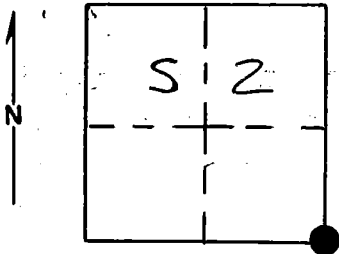
CORNER RECORD (SEARCH)

(Ref. FSM 7151.4)

Tract or Survey No. \_\_\_\_\_ Cor. No. \_\_\_\_\_

R.D. NORTH FORK J.D. County UMATILLA  
 N.F. UMATILLA State OREGON

CORNER DIAGRAM



DESCRIBE CORNER MONUMENT FOUND

Found 2½" brass cap monument marked:  
 in a mound of stone.

T5S R30E  
 S 2 | S 1  
 S 11 | S 12  
 1974  
 PLS 644

DESCRIBE BEARING TREES OR OTHER OFFICIAL ACCESSORIES FOUND

A 16" Ponderosa Pine N63°E, 115 lks. live and vigorous with scribes visible. A 28" Ponderosa Pine S62°E, 37.0 ft. live and vigorous with scribes visible. A 30" Ponderosa Pine S61°W, 64.7 ft. live and vigorous with scribes visible. A 20" Ponderosa Pine N63°W, 77.0 ft. live and vigorous with scribes visible. A 22" Ponderosa Pine stump N53°W, 42.0 ft. bottom of blaze evident.

PHOTO IDENTIFICATION DATA

Photo No. 1487-27  
 Filed At. Ranger Office  
 Object Ident. As shown  
 Ident. By D.I. Griffith  
*Signature*

DESCRIBE CORNER LOCATION RELATIVE TO NEAR-BY FEATURES, ALSO HOW TO REACH CORNER

Corner falls on top of small ridge approximately 100 feet South of the 5305 road.

PLANE COORDINATE POSITION DATA

State \_\_\_\_\_ Zone \_\_\_\_\_  
 X \_\_\_\_\_  
 Y \_\_\_\_\_  
 Estab. By \_\_\_\_\_

*Signature* \_\_\_\_\_ Title SURVEYOR Division \_\_\_\_\_ Headquarters \_\_\_\_\_

Date 9-7-88 FS-7100-52 (3/68)

**CORNER RECORD (PERPETUATION)**

**MONUMENT: DESCRIBE NEW MONUMENT SET, OR WORK DONE TO PRESERVE EXISTING MONUMENT**

NONE

**ACCESSORIES : DESCRIBE NEW BT'S WITNESS OBJECTS ETC. ESTABLISHED, OR WORK DONE TO PRESERVE EXISTING EVIDENCE**

Painted a 6 inch red band around all bearing trees and attached 54-3 and 54-9 signs.  
Set steel fencepost approximately 5 feet West with 54-2 and 54-9 signs attached.

Work Done By D.I. Griffith Title Surveyor Date 8-30-88 State Registration No. OPLS 644  
or Agency

Certified Cor. Record Prepared ? Yes  No  Filed At: \_\_\_\_\_ Date \_\_\_\_\_

**REMARKS**

Witness: Rick Robinson

Index File No. E-21 T. 55 R. 30E W.M. Tract or Surv. No. \_\_\_\_\_ Cor. \_\_\_\_\_

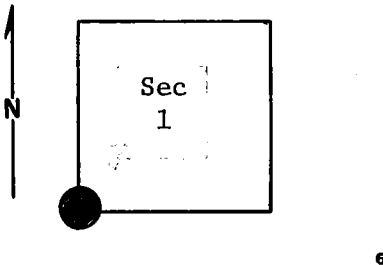
Index  
 File No. E-21  
 T 5 S R. 30 E  
 Merid. Willamette

**CORNER RECORD (SEARCH)**  
 (Ref. FSM 7151.4)

Tract or  
 Survey No. \_\_\_\_\_  
 Cor.  
 No. \_\_\_\_\_

R.D. Ukiah County Umatilla  
 N.F. Umatilla State Oregon

**CORNER DIAGRAM**



**DESCRIBE CORNER MONUMENT FOUND**

*Brass Cap! see Monumentation File.*

**DESCRIBE BEARING TREES OR OTHER OFFICIAL ACCESSORIES FOUND**

18" ponderosa pine with blaze on SW face, scribed R30E, S1, B.T.  
 30" ponderosa pine with blaze on NE face, scribed R30E, S11? (S12)  
 BT poster on tree bearing N 66°W - 56 links; also faded loc. poster  
 34" ponderosa pine with blaze on NE face, scribed S11; on tree is  
 BT poster 54-3, 5/25/73 (no initials.)  
 20" PP w/blaze on SE face, scribing burnt out. FS BT poster dated

**PHOTO IDENTIFICATION DATA**

Photo No. \_\_\_\_\_  
 Filed At. \_\_\_\_\_  
 Object Ident. \_\_\_\_\_  
 Ident. By \_\_\_\_\_  
*Signature*

**DESCRIBE CORNER LOCATION RELATIVE TO NEAR-BY FEATURES, ALSO HOW TO REACH CORNER**

/ 5/23/73  
 / Sec. 2 MLL

**PLANE COORDINATE POSITION DATA**

State \_\_\_\_\_ Zone \_\_\_\_\_  
 X \_\_\_\_\_  
 Y \_\_\_\_\_  
 Estab. By \_\_\_\_\_  
*Agency*

(10) Paced 460' west along abandoned fence line to Road S-598 and put up location poster.

Signature  
 B. Moore

Title  
 Eng, Tech

Division  
 Umatilla

Headquarters  
 S, O

Date  
 8/73

7100-52-(3/68)

CORNER RECORD (PERPETUATION)

MONUMENT: DESCRIBE NEW MONUMENT SET, OR WORK DONE TO PRESERVE EXISTING MONUMENT

ACCESSORIES : DESCRIBE NEW BT'S WITNESS OBJECTS ETC. ESTABLISHED, OR WORK DONE TO PRESERVE EXISTING EVIDENCE

Work Done By \_\_\_\_\_ Title \_\_\_\_\_ Date \_\_\_\_\_ State Registration No. \_\_\_\_\_  
or Agency \_\_\_\_\_  
Certified Cor. Record Prepared ? Yes No Filed At: \_\_\_\_\_ Date \_\_\_\_\_

REMARKS

Index File No. E-21 T. R. M. Tract or Surv. No. Cor.