

OREGON CORNER RESTORATION FORM

COUNTY: Umatilla DATE: 08/01/02

CORNER DESIGNATION: L-17, The West Quarter of Section 14. T5S., R31E., W.M.

PREVIOUS RENEWALS/SURVEYS ETC.: Corner originally set by George S. Pershin, under Contract No. 373, dated Sept. 17, 1880. Notes state: Set basalt stone, 18 x 10 x 7, on level for 1/4 Section corner.

MONUMENT AND ACCESSORIES FOUND: None, Corner point falls in a field which is harvested for native hay and may have been farmed in the past.

MONUMENT MARKING DETAIL:

T5S R31E
1/4
S15 | S14
2002
PLS 1106

MONUMENT SET:

Reestablished corner position by single proportion measure between the recovered NW Corner of Section 14 and the reestablished SW Corner of Section 14. At position determined by survey, set a 2 1/2" brass cap on a 1 1/4" x 30" galvanized iron pipe with cap flush with ground in a large open grass land. Monument marked as shown in "Monument Marking Detail". The corner accessories are all North of the monument where a fence exists.

New Accessories:

A 5/8" x 24" iron rebar with a yellow plastic cap marked "OR PLS 1106, WA PLS 17372", with cap set 1" above ground in a wire fence running East and West bears N 63° W, 75.5 feet.

A 5/8" x 24" iron rebar with a yellow plastic cap marked "OR PLS 1106, WA PLS 17372", with cap set 1" above ground in a wire fence running East and West bears N 14° E, 34.7 feet.

A 5/8" x 24" iron rebar with a yellow plastic cap marked "OR PLS 1106, WA PLS 17372", with cap set 1" above ground in a wire fence running East and West bears N 73° E, 112.7 feet.

A 3/4" brass washer stamped "PLS 1106" nailed to a gate corner post 1 foot above ground bears N 61° E, 68.8 feet.

Attached bearing object signs to all accessories. Set a steel fence post with a witness post sign wired to it 1 foot North of the Corner.

LOCATION AND COMMENTS:

Corner falls 34 feet South of a fence running East and West and approximately 150 feet West of a fence running South.

STATE PLANE COORDINATE, OREGON NORTH ZONE, NAD 83/91, INT. FOOT:

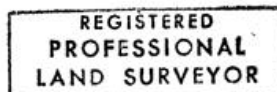
N = 538800.30
E = 8604156.11

FIRM: William R. Wells, PLS
P.O. Box 1696
Pendleton, OR 97801

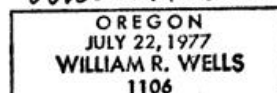
COMPASS DECLINATION: 18° East

Witnesses: Jason Wells, LSIT
Mark Hammersla
5S31L17

Surveyor's Seal



William R. Wells



renews 6-30-04

RECEIVED BY

Umatilla County Surveyor
Date 10-02
Rec'd By KK
No. 02-218-B