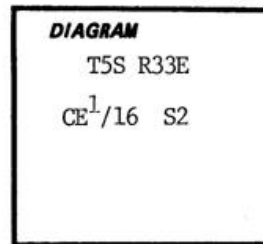


CERTIFIED RECORD OF LAND CORNER MONUMENTATION

C-20

History of original corner establishment:

No record of previous monumentation.



Description of corner evidence found:

None.

Description of monument and accessories established to perpetuate the original location of this corner:

Set a 2½"x30" alum. pipe with a 3" alum. cap containing a magnet and marked:

E 1/16

Built a stone mound around the monument.

C—C

From the corner:

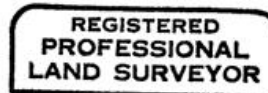
A Lodgepole, 10" dia., N83 3/4°E, 184.3 ft. marked: CE 1/16 S2 BT
A P. Pine, 17" dia., S41°E, 205.3 ft. marked: CE 1/16 S2 BT

S2
PLS 1832
1984

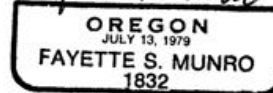
BTs have blaze and a 6" stripe painted red, a BT tag, a "Land Survey Monument: sign and an alum. "PLS 1832" washer nailed to the bottom of the blaze. There is a 6' steel fence post with a "Land Survey Monument" sign within 5' of the corner.

Measured to center of BTs using steel tape and staff compass. Magnetic declination set at 21½°E.

September 13, 1984.



Fayette S. Munro



Office of Surveyor County of Linnetilla
 State of Oregon, I hereby certify that the within instrument was filed in this office
 for record on the 10 day of October, 1984
David H. Keunbein by [Signature]
 (COUNTY OFFICIAL) (DEPUTY)