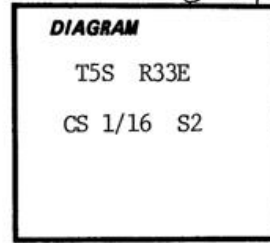


CERTIFIED RECORD OF LAND CORNER MONUMENTATION

D-17

History of original corner establishment:

No record of previous monumentation.



Description of corner evidence found:

None.

Description of monument and accessories established to perpetuate the original location of this corner:

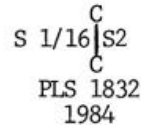
Set a 2½"x30" alum. pipe with a 3" alum. cap containing a magnet and marked:

Built a stone mound around the monument.

From the corner:

A Tamarack, 6" dia., S77½°W, 31.8 ft. marked: CS 1/16 S2 BT

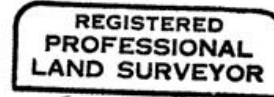
A D. Fir, 6" dia., S6 ¾°W, 14.0 ft. marked: CS 1/16 S2 BT



BTs have blaze and a 6" stripe painted red, a BT tag, a "Land Survey Monument" sign and an alum. "PLS 1832" washer nailed to the bottom of the blaze. There is a 6' steel fence post with a "Land Survey Monument" sign within 5' of the corner.

Measured to center of BTs using steel tape and staff compass. Magnetic declination set at 17 ¾°E.

September 15, 1984.



Office of Surveyor County of Umatilla  
 State of Oregon, I hereby certify that the within instrument was filed in this office  
 for record on the 10 day of October, 1984  
David H. Krumbain by \_\_\_\_\_  
 (COUNTY OFFICIAL) (DEPUTY)