

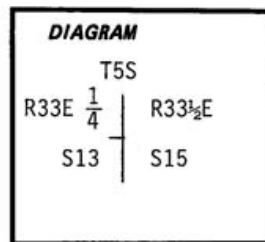
CERTIFIED RECORD OF LAND CORNER MONUMENTATION

Index File No. L-25

History of original corner establishment: Corner established under G.L.O. Contract No. 410, in 1881 by George S. Pershin. Surveyor General's records state.

Set basalt stone 14x8x6 ins. 10 ins. in ground on NW slope for 1/4 Sec. Corn. marked 1/4 on west face from which:

- Fir 18 in. dia. brs. S53°E, 20 lks. dist. marked 1/4 S BT.
- Tamarack 9 in. dia. brs. S38°W, 60 lks. dist. marked 1/4 S BT.



Description of corner evidence found: Found original stone 14"x8"x6"-4" in ground with visible "1/4" on west face. Found original BTs:

- A Fir 28" dia. bears S51°E, 14.0 ft. with healed over blazes.
- A Tamarack 14" dia. bears S44°W, 39.2 ft. with healed over blaze.

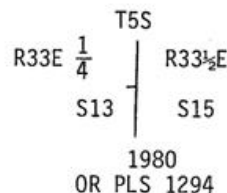
Description of monument and accessories I established to perpetuate the original location of this corner: In place of original stone set 2 1/2"x30" galvanized pipe with brass cap stamped:

Set pipe 22" in ground with mound of stone to cap. Buried the original stone alongside pipe.

New Bearing Trees.

- A White Fir 9" dia. bears N37°W, 38.6 ft. scribed 1/4 S13BT.
- A White Fir 6" dia. bears S27°W, 18.4 ft. scribed 1/4 S13 BT.

Attached 54-3 and 54-4 signs to all BTs. Attached brass washer stamped LS1294 to foot blaze of new BTs. Painted blazes and 6" band around all BTs. Attached 54-4 sign to metal post 5' north of corner.



I hereby certify the above corner monument was reestablished as herein described on June 16, 1980.

Witnesses: R. Orton  
G. Orton  
D. Allen



Office of..... County Surveyor..... County of..... Umatilla  
Oregon.....  
State of....., I hereby certify that the within instrument was filed in this office  
for record on the..... day of..... December....., 1980.  
..... by.....  
(COUNTY OFFICIAL) (DEPUTY)