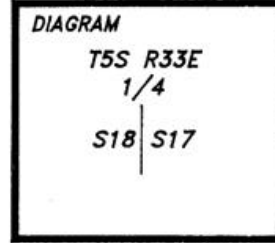


**CERTIFIED RECORD OF LAND CORNER MONUMENTATION**

L-05  
200440  
T. 5 S., R. 33 E.  
1/4 corner of sections 17 & 18

History of original corner establishment:

1882, George S. Pershin, U.S. Deputy Surveyor, while subdividing the township under G.L.O. Contract No. 430 established the corner as follows:  
Set a basalt Stone 18 X 12 X 5 on level near spring branch for 1/4 sec. cor., 12 ins in ground marked 1/4 on west face  
A Pine 24 ins. dia. brs. S. 30° E. 16 lks dist marked 1/4 S.B.T.  
A Pine 20 in. dia. brs. S. 60° W. 41 lks dist marked 1/4 S.B.T.



1977, Craig L. Wanless, BLM Cadastral Surveyor, Found The 1/4 sec. cor. of secs. 17 and 18, determined at record bearing and distance from the remains of an original bearing tree:  
A sawed and decayed pine stump, size indeterminate, bears S. 30° E., 16 lks. dist., with scribe marks 4 S visible on open blaze.  
At the corner point  
Set an iron post, 28 ins. long, 2 1/2 ins. diam., 24 ins. in the ground with brass cap from which new bearing trees  
A larch, 13 ins. diam., bears S. 76° E., 27 lks. dist., mkd. 1/4 S17 BT.  
A lodgepole pine, 13 ins. diam., bears N. 29° W., 157 lks. dist., mkd. 1/4 S18 BT.

1984, David H. Krumbein, LS 933, while surveying sections 20 and 21 (CS# 84-155-B, revised 12/20/84; CS# 85-43-B) found the BLM Brass cap.

Description of corner evidence found:

Found a 2 1/2" diameter iron pipe, with 3 1/4" diameter brass cap, projecting 2" out of the ground, marked as shown, from which:



- 16" Western Larch bears S 72 1/2° E, 17.8 feet, with hejed blaze.
- 18" stump bears S 26° E, 10.6 feet, with scribing visible on open blaze.
- 15" Ponderosa Pine bears N 27 1/2° W, 103.6 feet, with scribing visible on almost completely healed blaze.

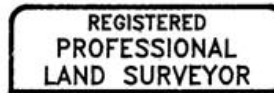
Description of monument and accessories I established to perpetuate the original location of this corner:

- New References:**  
16" Douglas Fir bears N 52 1/2° E, 76.3 feet, scribed  
1/4 S18 "BT".  
7" Ponderosa Pine bears N 35° W, 18.5 feet, scribed "1/4 S17" "BT".

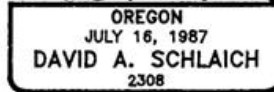
The new bearing trees are double blazed and have a 3/4" diameter brass washer stamped "RLS 2308" nailed to the lower blaze by the "BT" scribing.

DATUM: NAD83(1991) Oregon High Accuracy Reference Network  
STATE PLANE COORDINATES: Oregon North Zone in International Feet  
No.            Latitude            Longitude            Northing(Y)            Easting(X)  
200440        45°08'04.32946" N. 118°45'28.64420" W. 539988.953' 8651600.200'

Work Performed By: David A. Schlaich (RLS 2308)  
Witnessed By: Matthew Duffy  
Equipment: Warren-Knight Surveyor's Compass  
Magnetic Declination: 19 1/2' East  
Date: September 23, 2002



*David A. Schlaich*



Office of..... County of.....  
State of....., I hereby certify that the within instrument was filed in this office for record on the..... day of....., 20.....  
..... by.....  
(COUNTY OFFICIAL) (DEPUTY)

Form R6-7100-57 (9/71)

SEE MAP OF SURVEY NO. 03-019-B