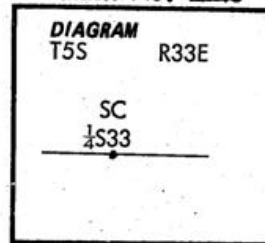


History of original corner establishment:

This corner was originally established by George S. Pershin under Contract No. 362 dated August 2, 1880. The notes state that at the corner a pine post was set from which:
A 8" Pine bears S22°E 60 lks (39.6 ft)
A 10" Pine bears S80°W 51 lks (33.7 ft)

Index No. ~~2-15~~



No record of subsequent remonumentation found in County Records.

Description of corner evidence found:

A healthy 23 inch Ponderosa Pine bears S80°W 33.7 ft.
An east-west fence located just south of corner.

Description of monument and accessories established to perpetuate the original location of this corner:

At the corner position a 2 inch by 30 inch iron pipe, with brass cap marked as shown, was set 28 inches in the ground and surrounded with a mound of earth. Set steel fence post on township line by corner and attached signs 54-2 and 54-4.

Established 2 new BT's:

A 26 inch Ponderosa Pine bears N51°W 58.6 ft scribed 1/4S 33SC BT

A 26 1/2" Ponderosa Pine bears N8 1/2°E 77.1 ft scribed 1/4S 33SC BT

New BT's have a lower blaze scribed BT with a brass washer stamped PLS 1106 nailed flush.

Attached signs 54-3 and 54-4 and painted red ring around all BT's above upper blaze.

Used steel tape and magnetic compass with 19 1/2° east declination. Measured to center of BT's.

See map of survey.

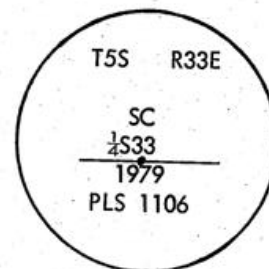
This corner set November 16, 1979.

Witnesses: Bob English
Clint Kelly

REGISTERED
PROFESSIONAL
LAND SURVEYOR

William R. Wells

OREGON
JULY 22, 1977
WILLIAM R. WELLS
1106



Office of County Surveyor County of Umatilla
State of Oregon I hereby certify that the within instrument was filed in this office
for record on the day of , 19
by (COUNTY OFFICIAL) (DEPUTY)

2-11

RECEIVED BY
Umatilla County Surveyor
Date 12-5-79
Rec'd By LMH
No. 9-1023-B
corresponding drawing

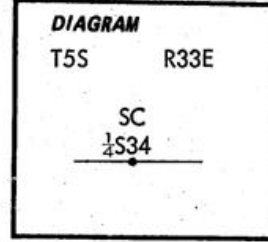
CERTIFIED RECORD OF LAND CORNER MONUMENTATION

History of original corner establishment:

The corner was originally established by George S. Pershin under Contract No. 362 dated August 2, 1880. The notes state that at the corner a 14"X12"x5" granite stone was set from which:
A 30" Pine bears North 14 lks (9.2 ft)

No record of subsequent remonumentation found in County Records.

Index No. Z-11



Description of corner evidence found:

A 38" Ponderosa Pine stump, 18 inches high bears North 9.2 feet. The scribing has weathered off the blaze on the south side of tree. Ring count to blaze indicate blaze was made near time of original survey. An old down east-west fence lies North of the corner.

Description of monument and accessories established to perpetuate the original location of this corner:

At the corner position a 2 inch by 30 inch iron pipe, with brass cap marked as shown, was set 22 inches in the ground and surrounded with a mound of earth. Buried original stone below ground beside new monument. Set steel fence post west of corner with sign 54-4 attached. Established 2 new BT's:

A 13" Tamarack bears N72 $\frac{1}{2}$ °W 53.9 ft scribed $\frac{1}{4}$ S34 SC BT

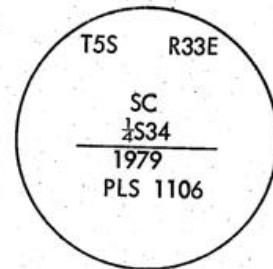
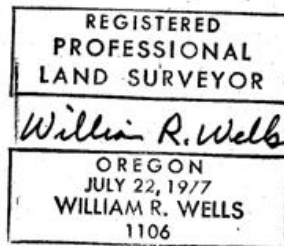
A 18" Tamarack bears N24 $\frac{1}{2}$ °E 63.5 ft scribed $\frac{1}{4}$ S34 SC BT

New BT's have a lower blaze scribed BT with a brass washer stamped PLS 1106 nailed flush.

Attached signs 54-3 and 54-4 to all BT's and painted red ring around the trees above upper blaze. Used steel tape and magnetic compass with 19 $\frac{1}{2}$ ° east declination. Measured to center of BT's. See map of survey.

This corner set November 20, 1979.

Witness: Clint Kelly



Office of County Surveyor..... County of Umatilla
State of Oregon..... I hereby certify that the within instrument was filed in this office
for record on the..... day of....., 19.....
..... by.....
(COUNTY OFFICIAL) (DEPUTY)

2-15

Form R6-7100-57 (9/71)

RECEIVED BY
Umatilla County Surveyor
Date 12-5-79
Rec'd By M.J.J.
No. Q-1223-B
Corresponding drawing