

Index

File No. C-17

CORNER RECORD (SEARCH)

(Ref. FSM 7151.4)

Tract or

Survey No. \_\_\_\_\_

Cor.

No. \_\_\_\_\_

T SS

R. 33 1/2 E

R.D. LeGrande

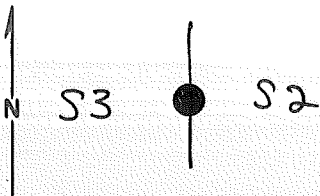
County Union

Merid. Willamette

N.F. W-W

State OR.

CORNER DIAGRAM



DESCRIBE CORNER MONUMENT FOUND

Original basalt stone, 13x12x12", mkd 1/4 on W. face.

DESCRIBE BEARING TREES OR OTHER OFFICIAL ACCESSORIES FOUND

A pine stump, 7" dia, bears S37E, 23 lbs w/lead block.

Pine snag, 32" dia, bears N42°W, 122 lbs, w/scribe marks  
1/4 S visible.

PHOTO IDENTIFICATION DATA

Photo No. \_\_\_\_\_

Filed At. \_\_\_\_\_

Object Ident. \_\_\_\_\_

Ident. By \_\_\_\_\_

*Signature*

PLANE COORDINATE POSITION DATA

State \_\_\_\_\_ Zone \_\_\_\_\_

X \_\_\_\_\_

Y \_\_\_\_\_

Estab. By \_\_\_\_\_

*Agency*

Signature

Title

Division

Headquarters

Date

CORNER RECORD (PERPETUATION)

MONUMENT: DESCRIBE NEW MONUMENT SET, OR WORK DONE TO PRESERVE EXISTING MONUMENT

Set Brass Cap mkd:

T5 S R33 1/2 E

1/4

S3 | S2

1977

ACCESSORIES: DESCRIBE NEW BT'S WITNESS OBJECTS ETC. ESTABLISHED, OR WORK DONE TO PRESERVE EXISTING EVIDENCE

Line 13" dia, brs N48E, 94 1/2 lks, mkd 1/4 S2 BT.

Line 10" dia brs N82W, 38 lks, mkd 1/4 S3 BT.

Deposit corner stone alongside iron post.

Work Done By BCM Title \_\_\_\_\_ Date 9-77 State Registration No. \_\_\_\_\_  
or Agency \_\_\_\_\_

Certified Cor. Record Prepared? Yes  No  Filed At: \_\_\_\_\_ Date \_\_\_\_\_

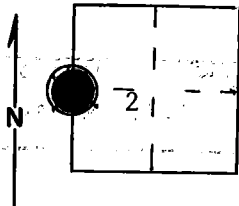
REMARKS

Corner is located 88 lks south of wire fence, extending E + W.

Index File No. T. R. M. Tract or Surv. No. Cor.

Index File No. C-17 **CORNER RECORD (SEARCH)** (Ref. FSM 7151.4) Tract or Survey No. \_\_\_\_\_ Cor. No. \_\_\_\_\_  
 T 5S R. 33 1/2E R.D. Ukiah County Umatilla  
 Merid. Willamette N.F. Umatilla State Oregon

CORNER DIAGRAM



DESCRIBE CORNER MONUMENT FOUND

MATERIAL: Basalt Stone SIZE: 7" X 8" X 12"  
 HEIGHT ABOVE GROUND: 6" CONDITION: Poor  
 MARKINGS: None visible

*Bress Cap: see Monumentation File*

DESCRIBE BEARING TREES OR OTHER OFFICIAL ACCESSORIES FOUND

8" lodgepole pine stump 3' high blazed on NW face: tree is down but leaning on stump. Scribed S, on top. Ponderosa pine 36" diameter bears N47°W, 122 links (approximately) with blaze on SE face scribed 1/4S.

DESCRIBE CORNER LOCATION RELATIVE TO NEAR-BY FEATURES, ALSO HOW TO REACH CORNER

PHOTO IDENTIFICATION DATA

Photo No. \_\_\_\_\_  
 Filed At. \_\_\_\_\_  
 Object Ident. \_\_\_\_\_  
 Ident. By \_\_\_\_\_  
*Signature*

PLANE COORDINATE POSITION DATA

State \_\_\_\_\_ Zone \_\_\_\_\_  
 X \_\_\_\_\_  
 Y \_\_\_\_\_  
 Estab. By \_\_\_\_\_  
*Agency*

Signature B. Moore Title Engineering Technician Division Headquarters Date 4/76

## CORNER RECORD (PERPETUATION)

---

 MONUMENT : DESCRIBE NEW MONUMENT SET, OR WORK DONE TO PRESERVE EXISTING MONUMENT
 

---

9

---

 ACCESSORIES : DESCRIBE NEW BT'S WITNESS OBJECTS ETC. ESTABLISHED, OR WORK DONE TO PRESERVE EXISTING EVIDENCE
 

---

Placed blank Forest Service BT poster on each bearing tree.

10

---

 Work Done By \_\_\_\_\_ Title \_\_\_\_\_ Date \_\_\_\_\_ State Registration No. \_\_\_\_\_  
 or Agency \_\_\_\_\_
 

---



---

 Certified Cor. Record Prepared ? Yes No Filed At: \_\_\_\_\_ Date \_\_\_\_\_
 

---

## REMARKS

East west fence line 3' north of NW bearing tree.  
 Blaze line east & west from corner stone.

12

---

 Index File No.      T.      R.      M.      Tract or Surv. No.      Cor.      13
 

---