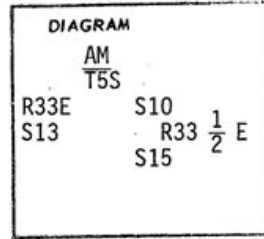


CERTIFIED RECORD OF LAND CORNER MONUMENTATION

Index File No. J-13

History of original corner establishment:

Corner established under G.L.O. Contract No. 457, in 1882 by Rufus S. Moore. Surveyor General's records state: Marked a Fir 18 in. diam. T5S R33 1/2E on E., S10 on North and S15 on South Faces with 4 notches on S. and 2 notches on N. faces Cor. corners to Secs. 10 and 15 from which: A Pine 24 ins. diam. bears N43°E, 40 lks. dist., marked T5S R33 1/2E S10 BT. A Fir 24 ins. diam. bears S52°E, 32 lks. dist., marked T5S R33 1/2E S15 BT.



This corner was set by a junior survey and therefore, according to BLM Manual Section 5-35 (3), is to be treated as a closing corner. The original corner position is East 4.09 ft. of the True corner position.

Description of corner evidence found:

Could not find any evidence of original corner tree. Found P. Pine 29" dia. with open upper blaze and visible scribing "T5S R33 1/2E S10" for NE BT. Found stump and broken off dead 24" Fir with visible scribing "T5S R33 1/2 E S15 BT" for SE BT.

Description of monument and accessories established to perpetuate the original location of this corner

Pulled record distances from faces of both original BTs to reestablish original corner position. This method best fits distances and bearings of record to BTs. At said point set 2 1/2"x30" galvanized pipe with brass cap stamped:

T5S
R33E S10
S13 S15 R33 1/2 E
1980
OR PLS 1294

Set pipe 24" in ground with mound of stone to cap.

Original BTs (dist. to center). A P. Pine 29" dia. bears N37°E 27.3 ft., scribed T5S R33 1/2E S10. A dead Fir 24" dia. bears S51°E, 22.0 ft., scribed T5S R33 1/2E S15 BT.

New Bearing Tree:

A Douglas Fir 7" dia. bears S69°E, 16.1 ft., scribed T5S R33 1/2E S15BT.

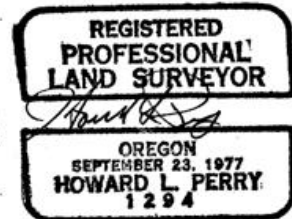
Attached 54-3 and 54-4 signs to all BTs. Attached brass washer stamped LS 1294 to new BT. Painted blazes and 6" band around all BTs red.

Attached 54-2 and 54-4 signs to metal fence post 5 ft. north of corner. The 54-3 signs have AM marked on them.

I hereby certify the above corner monument was reestablished as herein described on June 16, 1980.

Witnesses: R. Orton
G. Orton
D. Allen
Umatilla

Office of County Surveyor County of Umatilla
State of Oregon, I hereby certify that the within instrument was filed in this office for record on the 16 day of December, 1980.
David Humber (COUNTY OFFICIAL) by Betty Shadd (DEPUTY)



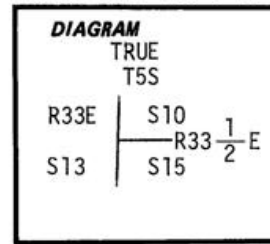
R-187-B

CERTIFIED RECORD OF LAND CORNER MONUMENTATION

INDEX FILE NO. J-13

History of original corner establishment:

Corner established under G.L.O. Contract No. 457, in 1882 by Rufus S. Moore. Surveyor General's records state: Marked a Fir 18 in. diam. T5S R33 1/2E on E., S10 on North and S15 on South Faces with 4 notches on S. and 2 Notches on N. faces Cor corners to Secs. 10 and 15 from which: A Pine 24 ins. diam. bears N43°E, 40 lks dist., marked T5S R33 1/2E S10 BT. A Fir 24 ins. diam. bears S52°E, 32 lks. dist., marked T5S R33 1/2E S15 BT. This corner was set by a junior survey and therefore, according to BLM Manual Section 5-35 (3), is to be treated as a closing corner. The original corner position is east 4.09 ft. of the True corner position.

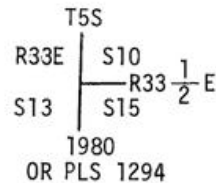


Description of corner evidence found:

Count not find any evidence of original corner tree. Found P. Pine 29" dia. with open upper blaze and visible scribing "T5S R33 1/2E S10" for NE BT. Found stump and broken off dead 24" Fir with visible scribing "T5S R33 1/2E S15 BT" for SE BT.

Description of monument and accessories I established to perpetuate the original location of this corner:

At the surveyed True corner position set
2 1/2"x30" galvanized pipe with brass cap stamped
Set pipe 20" in ground with mound of stone to cap.

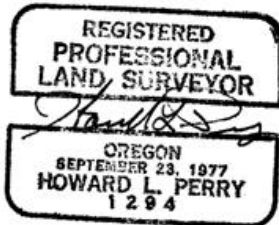


Original BTs (dist. to center) A P.Pine 29" dia. bears N43°E, 30.3 ft, scribed T5S R33 1/2E S10. A dead Fir 24" dia. bears S58°E, 25.9 ft, scribed T5S R33 1/2E S15 BT.

New Bearing Tree:

A Douglas Fir 7" dia. bears S74°E, 20.3 ft, scribed T5S R33 1/2E S15 BT.

Attached 54-3 & 54-4 signs to all BTs. Attached brass washer stamped LS1294 to new BT. Painted blazes and 6" band around all BTs red. Attached 54-2 & 54-4 signs to metal fence post 5 ft north of corner. The 54-3 signs have True marked on them.



I hereby certify the above corner monument was re-established as herein described on August 28, 1980.

Witnesses: R. Orton
L. Huntsman
D. Allen

Office of... County Surveyor County of... Umatilla
State of... Oregon I hereby certify that the within instrument was filed in this office for record on the... day of... December... 19... 80
..... by Betty Huntsman (DEPUTY)
(COUNTY OFFICIAL)