

CERTIFIED RECORD OF LAND CORNER MONUMENTATION

J-17

History of original corner establishment:
The Record of Remonumentation of this corner in 1977 by the Bureau of Land Management, based on evidence of the original Government Survey states:

The corner of Sections 10, 11, 14 and 15, determined at record bearing and distance from the remains of the original bearing trees:

A sawed pine stump, 15 ins. diam., bears N. 11° E., 109 lks., dist., no marks visible on open blaze.

A juniper, 28 ins. diam., bears S. 59° E., 112 lks, dist., with scribe marks S14 BT visible on open blaze.

A pine, 23 ins. diam., bears N. 31° W., 114 lks. dist., with fragmentary scribe marks visible on open blaze.

At the corner point

Set an iron post, 28 ins. long, 2-1/2 ins. diam., 10 ins. in the ground, to solid rock, and in a mound of stone, 3 ft. base, to top, with brass cap mkd. (See Diagram) from which new bearing trees

A pine, 10 ins. diam., bears N. 5° E., 69 lks. dist., mkd. T5S, R33-1/2E S11 BT.

A pine, 15 ins. diam., bears S. 50° W., 51 lks. dist., mkd. T5S, R33-1/2E S15 BT.

Description of corner evidence found:

Found the 1977 BLM monument, loosely set and extended 16" out of a deteriorated mound of stone, from which the corner accessories as noted in the 1977 record:

A rotted Ponderosa Pine stump approximately 15" dia., no markings visible, bears N 11° E 71.9 ft.

A 16" dia. fork of a 30" dia. Juniper, alive and in fair condition, with scribing "S14BT" and other illegible scribing on two partially healed side-by-side blazes, bears S 59° E 73.9 ft.

A 24" Ponderosa Pine, alive and in good condition with illegible scribing visible on a previously opened and heavily pitched-over blaze bears N 31° W 75.2 ft.

A 12" Ponderosa Pine, alive and in good condition with scribing "T5S R33-1/2E S11BT" visible on a partially healed single blaze bears N 5° E 45.5 ft.

And a 16" Ponderosa Pine, alive and in good condition with scribing "T5S R33-1/2E S15BT" visible on a partially healed single blaze bears S 50° W 33.7 ft.

Description of monument and accessories I established to perpetuate the original location of this corner:

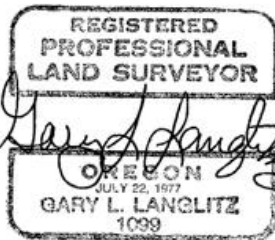
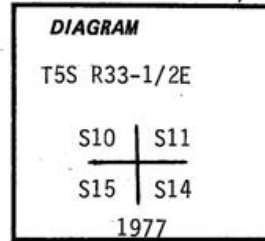
I rebuilt a mound of stone and earth, 5 ft. dia. and 1-1/2 ft. above ground, around the 1977 BLM monument. As necessary, "Bearing Tree" and "Attention" signs were attached to the live corner accessories. Each live corner accessory was painted red in the blaze area and with a painted band around the tree at approximately 5 ft. above ground.

My visit to this corner was made at the request of Boise Cascade Corporation and Hafer Logging, Inc. to repair any damage to the corner due to recent timber harvest activities.

This corner is located on a moderate south slope, approximately 70 ft. north of an E-W fence and approximately 300 ft. north of an E-W road.

November 15, 1988

Gary L. Langlitz, L.S. 1099



RECORDED BY
Umatilla County Surveyor
Date 12-88
Rec'd By KA
No. 88-72-R

Office of Dept. of Survey County of Umatilla
State of OR, I hereby certify that the within instrument was filed in this office
for record on the 15 day of December, 1988
David de Lumbria (COUNTY OFFICIAL) by Kathleen Amberg (DEPUTY)