

**OREGON CORNER RESTORATION FORM**

Section 35 Township 6N Range 33E  
 County Umatilla Date: April 1, 2003

Corner Designation: 6N33Z19

Common quarter corner to section 35, T6N, R33E, and Section 2, T5N, R33E, W.M., Umatilla County, Oregon.

State Plane Coordinates, Oregon North, 83(1991)  
 N = 836261.80 E = 8672075.42

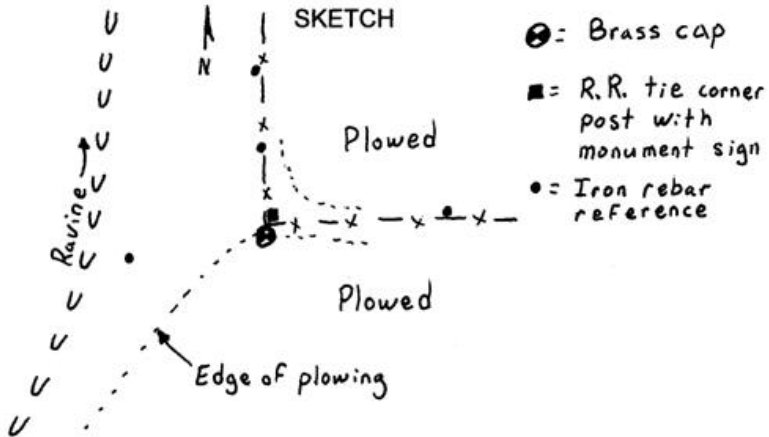
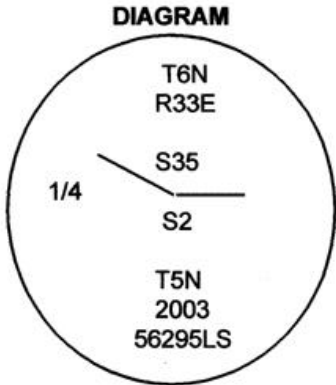
Previous Renewals / Surveys, etc.

Corner originally set by Deputy Surveyors Odell & Lewis under contract 110 dated February 7, 1865. Their record reads: Set 1/4 Sec. post on level. Drove charred stake, dug pits and raised mound, as per instructions.

Monument and Accessories found: ( condition and source )

A fence corner with fences running North and East. The location agrees with record distances as given by U.S. Deputy Surveyor in Contract 209, July 6th, 1874, to a fence corner at the Southwest Corner of Section 35 and a stone with an "x" at the Southeast corner of Section 35.

Condition Report Only  
 Not found  
 Remonumented  
 Unrecorded  
 Surveyed in  
 Referenced out



**MONUMENT (S) AND ACCESSORIES SET (Procedures and Description)**

I set a 2 1/4" brass cap on a 1 1/2" x 30" galvanized iron pipe 30" in the ground at the foot of the railroad tie fence corner. I attached a County monument sign to the fence corner post.

For references, I set four 5/8" by 24" green coated iron rebars with 1 1/8" orange plastic caps stamped WTS and 56295LS as described below:

- a rebar bears N02°41'51"W, 25.63 feet;
- a rebar bears N02°13'07"W, 52.81 feet;
- a rebar bears N87°49'05"W, 47.79 feet;
- a rebar bears S89°08'56"E, 43.77 feet;

The monument and references were tied using a LIECA system 300 RTK GPS.

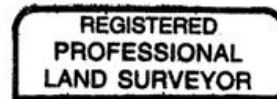
Location and comments

Compass Declination

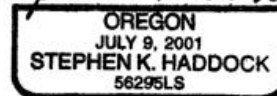
Surveyors Seal

RECEIVED BY:  
Umatilla County Surveyor  
 Date: 11-03  
 Rec'd By: KK  
 No. 03-315-C

Firm / Agency  
 Witness Tree Surveying  
 Address  
 P.O. Box G  
 Pilot Rock, Or. 97868  
 Party Chief  
 Stephen K, Haddock



*Stephen K. Haddock*



RENEWAL DATE 6-30-05