

OREGON CORNER RESTORATION FORM

Section: 15
 Township: 6 North
 Range: 34 East of the Willamette Meridian
 County: Umatilla
 Date: June 1, 2002

Corner Indexing Information: Township 6N Range 34E Corner Code J-K 15 (Willamette Meridian)
 Additional Identifier: (e.g. BLM designation for the corner, street intersection, plat name, block, lot, etc.)

Oregon Plane Coordinates: N: 857058.014 E: 8698096.903

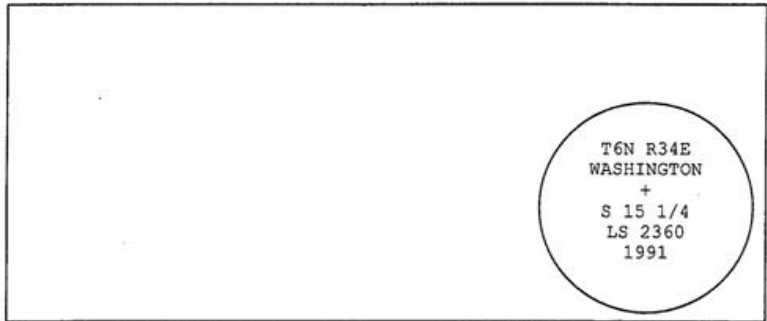
Zone: North Order: second Datum: NAD83-91 Convergence: 1°23'03.2" Scale Factor: .99997261

Previous Renewals/Surveys, etc: Tomkins Land Surveying, in 1991, found a 6"x11"x17" stone with "x", and an antique bottle at the corner, and set a 1" pipe with brass cap at the rocks position.

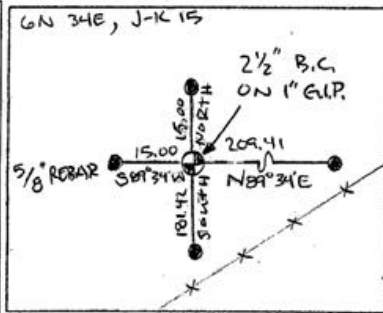
Monument(s) & Accessories Found (Condition & Source):

At the intersection of the N-S Centerline of section 15, T6N R34E, and Stateline, found 2 1/2" brass cap on 1" galvanized pipe at surface.

Monument Set (Procedures & Description):



Monument Detail:



New Accessories: WE SET:

A 5/8 rebar with yellow plastic cap stamped 'Tomkins Surveying' which bears N 89°34'E ~ 209.41 feet from the corner. Attached a Umatilla County Bearing Object Sign to the west face of locust fence post. A 5/8 rebar with yellow plastic cap stamped 'Tomkins Surveying' which bears South ~ 181.42 feet from the corner. Attached a Umatilla County Bearing Object Sign to a t-post. A 5/8 rebar with yellow plastic cap stamped 'Tomkins Surveying' which bears S 89°34'W ~ 15.00 feet from the corner. No Umatilla County Bearing Object Sign posted. A 5/8 rebar with yellow plastic cap stamped 'Tomkins Surveying' which bears North ~ 15.00 feet from the corner. No Umatilla County Bearing Object Sign posted.

Location & Comments:

Compass Declination:

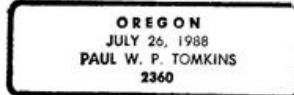
19° East

Surveyor's Seal

Firm/Agency: Tomkins Land Surveying, Inc.
 20 E. Poplar, Suite 204
 Walla Walla, WA 99362



Paul W. P. Tomkins



*renews 6/30/04
 6/30/02*

Party Chief: Bryan Martin
 Notes: Bryan Martin
 Witness: Eric Flowers