

# OREGON CORNER RESTORATION FORM

Section: 13, 14, 23 & 24  
Township: 6 North  
Range: 34 East of the Willamette Meridian  
County: Umatilla  
Date: June 1, 2002

Corner Indexing Information: Township 6N Range 34E Corner Code N 21 (Willamette Meridian)

Additional Identifier: (e.g. BLM designation for the corner, street intersection, plat name, block, lot, etc.)

This corner is common to sections 13, 14, 23 & 24.

Oregon Plane Coordinates: N: 853773.814 E: 8706188.485

Zone: North Order: second Datum: NAD83-91 Convergence: 1°24'23.7" Scale Factor: .99996666

Previous Renewals/Surveys, etc: This corner was originally set by U.S. Deputy Surveyors William Odell and William Lewis under their contract No. 110 dated February 7, 1865. The Surveyor General's notes state "set post corner, drove charred stake, dug pits and raised mounds per instructions". Bradley, in 1915, shows a stone at the corner (Co. Surveyor Book 2, Page 274). Munns, in 1979, set a 1 1/2" pipe at the corner (Survey for Webster). Krumbein, in 1979, shows a 1 1/2" pipe at the corner (Survey Q-1203-B).

### Monument(s) & Accessories Found (Condition & Source):

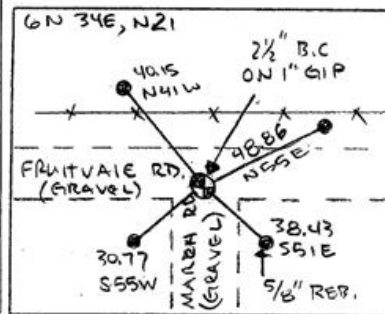
At the southwest corner of section 13, T6N R34E, found 1 1/2" iron pipe 10" below the surface of the gravel.

### Monument Set (Procedures & Description):

Set 1"x30" flared end galvanized pipe with 2 1/2" brass cap 10" below the surface gravel. Stamped (see example below).

T6N R34E  
LS 2360  
S14 S13  
S23 S24  
2001

### Monument Detail:



### New Accessories: WE SET:

A 5/8 rebar with yellow plastic cap stamped 'Tomkins Surveying' which bears N 55°E ~ 48.86 feet from the corner. Attached a Umatilla County Bearing Object Sign to t-post. A 5/8 rebar with yellow plastic cap stamped 'Tomkins Surveying' which bears S 51°E ~ 38.43 feet from the corner. Attached a Umatilla County Bearing Object Sign to north side of road sign pole. A 5/8 rebar with yellow plastic cap stamped 'Tomkins Surveying' which bears S 55°W ~ 30.77 feet from the corner. Attached a Umatilla County Bearing Object Sign to northeast face of power pole. A 5/8 rebar with yellow plastic cap stamped 'Tomkins Surveying' which bears N 41°W ~ 40.15 feet from the corner. Attached a Umatilla County Bearing Object Sign to southeast face of guy pole.

### Location & Comments:

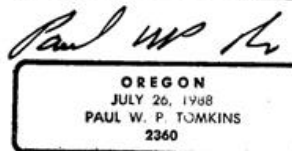
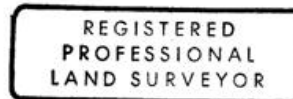
### Compass Declination:

19° East

Firm/Agency: Tomkins Land Surveying, Inc.  
20 E. Poplar, Suite 204  
Walla Walla, WA 99362

Party Chief: Bryan Martin  
Notes: Bryan Martin  
Witness: Eric Flowers

### Surveyor's Seal



renews 6/30/04  
6/30/02