

# OREGON CORNER RESTORATION FORM

**Section:** 13 & 24  
**Township:** 6 North  
**Range:** 34 East of the Willamette Meridian  
**County:** Umatilla  
**Date:** June 1, 2002

**Corner Indexing Information:** Township 6N Range 34E Corner Code N 25 (Willamette Meridian)

**Additional Identifier:** (e.g. BLM designation for the corner, street intersection, plat name, block, lot, etc.)

This corner is common to: Range 34E-Sections 13 & 24 ~ Range 35E - Sections 18 & 19.

**Oregon Plane Coordinates:** N: 853841.161 E: 8711167.657

**Zone:** North **Order:** second **Datum:** NAD83-91 **Convergence:** 1°25'13.7" **Scale Factor:** .99996451

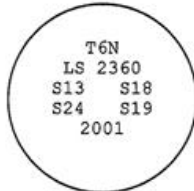
**Previous Renewals/Surveys, etc:** This corner was originally set by U.S. Deputy Surveyors William Odell and William Lewis under their contract No. 110 dated February 7, 1865. The Surveyor General's notes state "set post corner, drove charred stake, dug pits and raised mounds per instructions". In 1979, Krumbein shows a bent railroad spike (Survey Q1203-B). In 1983, McLind shows a railroad spike (Survey 83-166-A).

**Monument(s) & Accessories Found (Condition & Source):**

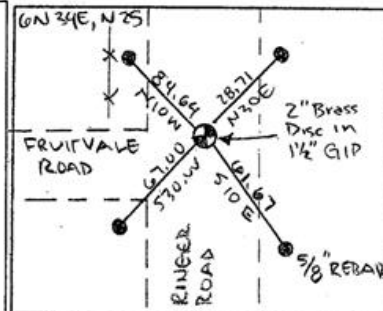
At the southeast corner of section 13, T6N R34E, found railroad spike with punch 4" below the surface pavement.

**Monument Set (Procedures & Description):**

Removed Railroad spike and drove 1 1/2" x 15 1/2" galvanized iron pipe into roadbed. Placed 10" of concrete around pipe and filled pipe with concrete and set 2" brass disc in 1/2" below the surface of the pavement. Stamped (see example below)



**Monument Detail:**



**New Accessories: WE SET:**

A 5/8 rebar with yellow plastic cap stamped 'Tomkins Surveying' which bears N 30°E ~ 28.71 feet from the corner. Attached a Umatilla County Bearing Object Sign to the west face of telephone junction box at the bottom. A 5/8 rebar with yellow plastic cap stamped 'Tomkins Surveying' which bears S 10°E ~ 61.67 feet from the corner. Attached a Umatilla County Bearing Object Sign to northwest side of power pole. A 5/8 rebar with yellow plastic cap stamped 'Tomkins Surveying' which bears S 30°W ~ 67.00 feet from the corner. Attached a Umatilla County Bearing Object Sign to a t-post. A 5/8 rebar with yellow plastic cap stamped 'Tomkins Surveying' which bears N 10°W ~ 84.68 feet from the corner. Attached a Umatilla County Bearing Object Sign to a t-post.

**Location & Comments:**

Fruitvale and Ringer Road intersection

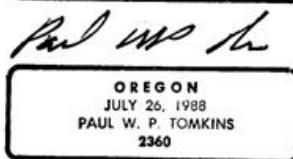
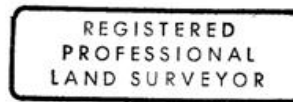
**Compass Declination:**

19° East

**Firm/Agency:** Tomkins Land Surveying, Inc.  
 20 E. Poplar, Suite 204  
 Walla Walla, WA 99362

**Party Chief:** Bryan Martin  
**Notes:** Bryan Martin  
**Witness:** Eric Flowers

**Surveyor's Seal**



renews 6/30/04  
6/30/02