

**OREGON CORNER RESTORATION FORM**

Section: 16 & 17  
 Township: 6 North  
 Range: 35 East of the Willamette Meridian  
 County: Umatilla  
 Date: June 1, 2002

Corner Indexing Information: Township 6N Range 35E Corner Code J-K 9 (Willamette Meridian)  
 Additional Identifier: (e.g. BLM designation for the corner, street intersection, plat name, block, lot, etc.)

This corner is common to sections 16 & 17.

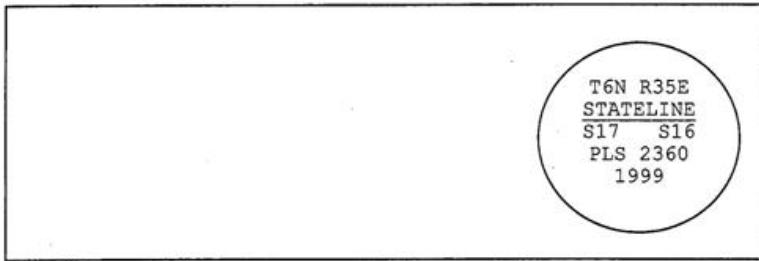
Oregon Plane Coordinates: N: 857583.735 E: 8721759.317  
 Zone: North Order: second Datum: NAD83-91 Convergence: 1°27'01.0" Scale Factor: .99996203

Previous Renewals/Surveys, etc.: Originally surveyed by U.S. Deputy Surveyor William Odell under his contract No. 110, dated 8-23-1865. The Surveyor Generals notes state, "set post corner for sections 16 and 17, drove charred stake, dug pits, and raised mounds as per instructions." County Survey No. 53, Book 1, Page 250, dated April 21, 1892, Arnold set a smooth boulder 11"x7"x5" unmarked to note original closing corner and 15 feet south of it he set a smooth boulder 13"x7"x7", 13" in the ground to mark the true closing corner to sections 16 and 17 marked CC and four notches on south face and four notches on east face. Umatilla County Survey no. 93-40-B, dated 5-26-93, Harris set a brass cap by survey. Umatilla County Survey No. 99-209-C, dated 10-8-99, Tomkins Land Surveying found a 4"x8"x12" pyramidal rock with a small "x" in the top 47.9' east of Harris' brass cap and set a 2" brass cap on a 1" galvanized iron pipe in its place.

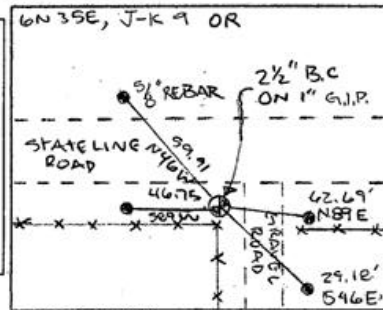
**Monument(s) & Accessories Found (Condition & Source):**

At the intersection of the West line of section 16, T6N 35E, with the Stateline found 1" galvanized pipe with 2 1/2" brass cap 4" above the natural ground.

**Monument Set (Procedures & Description):**



**Monument Detail:**



**New Accessories: WE SET:**

A 5/8 rebar with yellow plastic cap stamped 'Tomkins Surveying' which bears N 89°E ~ 62.69 feet from the corner. Attached a Umatilla County Bearing object to a t-post. A 5/8 rebar with yellow plastic cap stamped 'Tomkins Surveying' which bears S 46°E ~ 29.18 feet from the corner. No Umatilla County Bearing object set. A 5/8 rebar with yellow plastic cap stamped 'Tomkins Surveying' which bears S 89°W ~ 46.75 feet from the corner. Attached a Umatilla County Bearing object to the east face of power pole. A 5/8 rebar with yellow plastic cap stamped 'Tomkins Surveying' which bears N 46°W ~ 59.91 feet from the corner. Found a Umatilla County Bearing object attached to the southeast face of power pole reading coordinates 60.3 feet S 46-24 and changed distance to 59.9 feet.

**Location & Comments:**

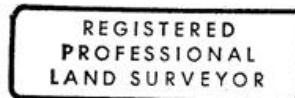
**Compass Declination:**

19° East

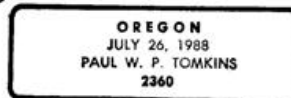
Firm/Agency: Tomkins Land Surveying, Inc.  
 20 E. Poplar, Suite 204  
 Walla Walla, WA 99362

Party Chief: Bryan Martin  
 Notes: Bryan Martin  
 Witness: Eric Flowers

**Surveyor's Seal**



*Paul W. P. Tomkins*



*renews 6/30/04*

*6/30/02*

*03-23-C*