

OREGON CORNER RESTORATION FORM

Section: 17 & 18
Township: 6 North
Range: 35 East of the Willamette Meridian
County: Umatilla
Date: June 1, 2002

Corner Indexing Information: Township 6N Range 35E Corner Code L 5 (Willamette Meridian)

Additional Identifier: (e.g. BLM designation for the corner, street intersection, plat name, block, lot, etc.)

This corner is common to Sections 17 & 18.

Oregon Plane Coordinates: N: 856676.383 E: 8716461.658

Zone: North **Order:** second **Datum:** NAD83-91 **Convergence:** 1°26'07.7" **Scale Factor:** .99999967

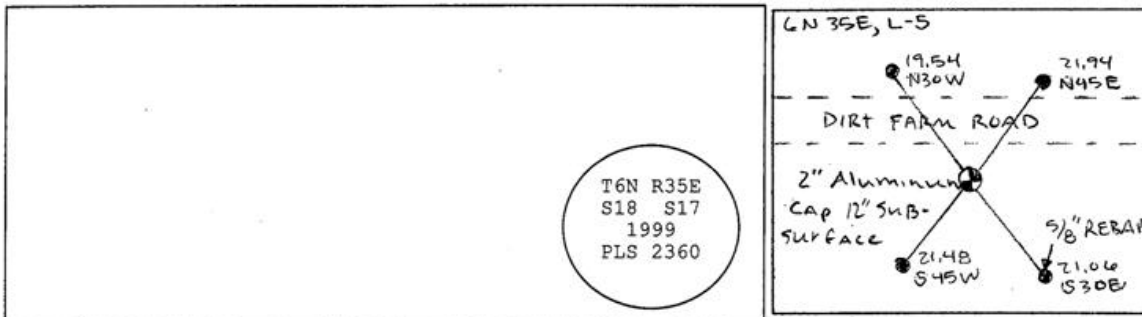
Previous Renewals/Surveys, etc.: Originally surveyed by U.S. Deputy Surveyor William Odell under his contract No. 110, dated 8-23-1865. The Surveyor Generals notes state, "set ¼ section corner post, drove charred stake, dug pits, and raised mounds as per instructions." No renewals of original corner could be found. County Survey No. 93-40-B, dated 5-26-93, Harris set a 2" brass cap on a 2" x 30" galvanized iron pipe by survey. County Survey No. 99-209-C, dated 10-08-99, Tomkins Land Surveying rejected Harris' brass cap and set a 2 ½" magnetized aluminum cap on a 2 ½" x 30" aluminum pipe 2 feet below the surface S 83° 41' W 93.80 feet from Harris' brass cap.

Monument(s) & Accessories Found (Condition & Source):

At the West Corner of Section 17, T6N R35E, found 2" aluminum cap 12" below the surface.

Monument Set (Procedures & Description):

Monument Detail:



New Accessories: WE SET:

A 5/8 rebar with yellow plastic cap stamped 'Tomkins Surveying' which bears N 45°E ~ 21.94 feet from the corner. Set a Umatilla County Bearing object 12" below the surface no plates or posts set. A 5/8 rebar with yellow plastic cap stamped 'Tomkins Surveying' which bears S 30°E ~ 21.06 feet from the corner. Set a Umatilla County Bearing object 12" below the surface no plates or posts set. A 5/8 rebar with yellow plastic cap stamped 'Tomkins Surveying' which bears S 45°W ~ 21.48 feet from the corner. Set a Umatilla County Bearing object 12" below the surface no plates or posts set. A 5/8 rebar with yellow plastic cap stamped 'Tomkins Surveying' which bears N 30°W ~ 19.54 feet from the corner. Attached a Umatilla County Bearing object to bottom of irrigation head. Rebar and plastic cap set at surface.

Location & Comments:

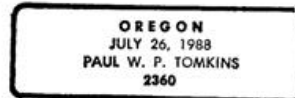
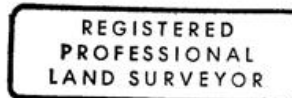
Compass Declination:

19° East

Firm/Agency: Tomkins Land Surveying, Inc.
 20 E. Poplar, Suite 204
 Walla Walla, WA 99362

Party Chief: Bryan Martin
Notes: Bryan Martin
Witness: Eric Flowers

Surveyor's Seal



renews 6/30/04
6/30/02

03-23-C