

PAUL W.P. TOMKINS, LAND SURVEYOR  
LAND CORNER RECORD

UMATILLA COUNTY County

T 06N, R 35E., W.M.

Corner Code No. N-17

Segregated Surveys:

Name: NORTHEAST CORNER SEC. 22

Corner No.:

Reserve, Townsite

DLC, HES, Tract, Mining Claim, Indian Allotment, Federal

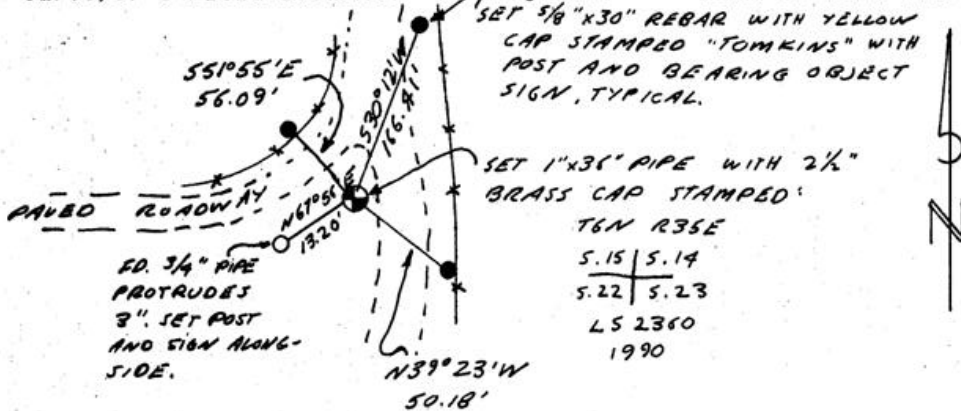
1. History of Corner Establishment and Subsequent Restoration:

CORNER ORIGINALLY SET BY ODELL AND LEWIS UNDER GLO CONTRACT NO. 110 IN 1865. CORNER IS SHOWN ON SURVEY P-53-C BY MCLIND AS A " 1/2" PIPE SET BY STREAMER" AND ON SURVEY H-8-A BY STREAMER AS A " 3/4" X 36" PIPE". CORNER POSITION IS SHOWN ON SURVEY 85-149-B BY KRUMBEIN.

2. Description of Evidence Found:

FD. 3/4" PIPE 13.2' SOUTHWEST OF POSITION FOR CORNER SHOWN ON THE SURVEYS NOTED ABOVE. 1/4 CORNERS SOUTH AND WEST OF THIS CORNER WERE FOUND AS NOTED ON SAID SURVEYS. PIPE WAS NOT HELD AS BEING THE SECTION CORNER.

3. Describe Monument, Accessories, and Corollary Data to Perpetuate this Corner Location. Diagram corner, indicate meridian and reference to map of Record. Surveyor's Field Book No. Page No. Date of Work 3/2/90



SET 5/8" X 30" REBAR WITH YELLOW CAP STAMPED "TOMKINS" WITH POST AND BEARING OBJECT SIGN, TYPICAL.

SET 1" X 36" PIPE WITH 2 1/2" BRASS CAP STAMPED:  
 T6N R35E  
 5.15 | 5.14  
 5.22 | 5.23  
 LS 2360  
 1990

Oregon Plane Coordinates: North Zone, Y  
Order Accuracy. Derived From:

Pin Pointed on Photo No. Date Located at

SURVEYOR'S CERTIFICATE

This corner record correctly represents work performed by me or under my direction in compliance with the provisions of the laws of the State of Oregon.

Date 3/5/90

*Paul W.P. Tomkins*  
Signature

Certificate No. 2360

REGISTERED PROFESSIONAL LAND SURVEYOR

*Paul W.P. Tomkins*

OREGON  
JULY 1885  
PAUL W.P. TOMKINS  
2360

AUDITOR'S CERTIFICATE

RECEIVED BY  
Umatilla County Surveyor  
Date 03-90  
Rec'd By RA  
No. 90-13-B