

OREGON CORNER RESTORATION FORM

Section: 17, 18, 19 & 20
Township: 6 North
Range: 35 East of the Willamette Meridian
County: Umatilla
Date: June 1, 2002

Corner Indexing Information: Township 6N Range 35E Corner Code N 5 (Willamette Meridian)

Additional Identifier: (e.g. BLM designation for the corner, street intersection, plat name, block, lot, etc.)

This corner is common to sections 17, 18, 19 & 20.

Oregon Plane Coordinates: N: 854025.071 E: 8716485.078

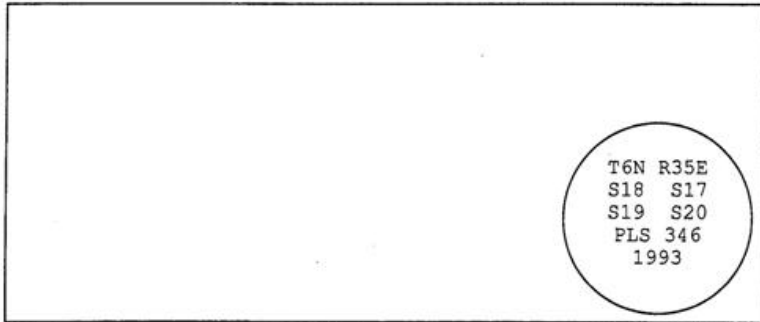
Zone: North **Order:** second **Datum:** NAD83-91 **Convergence:** 1°26'07.1" **Scale Factor:** .99996157

Previous Renewals/Surveys, etc.: Originally surveyed by U.S. Deputy Surveyor William Odell under his contract No. 110, dated 8-23-1865. The Surveyor General's notes state, "set a post corner for sections 17, 18, 19, and 20, drove charred stake, dug pits, and raised mounds as per instructions." County Survey No. 93-40-B, dated 5-26-93, Harris set a 2" brass cap on a 2"x30" galvanized iron pipe at the intersection of the centerline of the county road and a plow line. County Survey No. 99-209-C, Tomkins Land Surveying found and accepted Harris' brass cap.

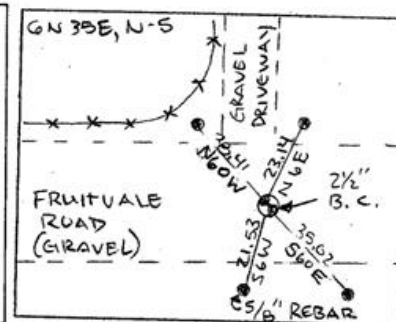
Monument(s) & Accessories Found (Condition & Source):

At the Southwest corner of section 17, T6N R35E, found 2 1/2" brass cap 6" below the surface of the gravel.

Monument Set (Procedures & Description):



Monument Detail:



New Accessories: WE SET:

A 5/8 rebar with yellow plastic cap stamped 'Tomkins Surveying' which bears N 6°E ~ 23.14 feet from the corner. No plates or posts set. A 5/8 rebar with yellow plastic cap stamped 'Tomkins Surveying' which bears S 60°E ~ 35.02 feet from the corner. No plates or posts set. A 5/8 rebar with yellow plastic cap stamped 'Tomkins Surveying' which bears S 6°E ~ 21.53 feet from the corner. Set a Umatilla County Bearing object on the North face of power pole. A 5/8 rebar with yellow plastic cap stamped 'Tomkins Surveying' which bears N 60°W ~ 38.41 feet from the corner. Attached a Umatilla County Bearing object to Southeast face of railroad tie gate/fence post.

Location & Comments:

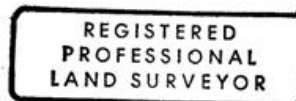
Compass Declination:

19° East

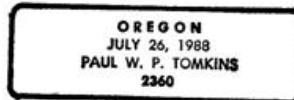
Firm/Agency: Tomkins Land Surveying, Inc.
 20 E. Poplar, Suite 204
 Walla Walla, WA 99362

Party Chief: Bryan Martin
Notes: Bryan Martin
Witness: Eric Flowers

Surveyor's Seal



Paul W. P. Tomkins



*renews 6/30/04
6/30/02*