

OREGON CORNER RESTORATION FORM

Section: 22 & 23
Township: 6 North
Range: 35 East of the Willamette Meridian
County: Umatilla
Date: June 1, 2002

Corner Indexing Information: Township 6N Range 35E Corner Code P 17 (Willamette Meridian)

Additional Identifier: (e.g. BLM designation for the corner, street intersection, plat name, block, lot, etc.)

This quarter corner is common to sections 22 & 23.

Oregon Plane Coordinates: N: 851660.044 E: 8732447.715

Zone: North **Order:** second **Datum:** NAD83-91 **Convergence:** 1°28'46.8" **Scale Factor:** .99995505

Previous Renewals/Surveys, etc.: Originally surveyed by U.S. Deputy Surveyor William Odell under his contract No. 110 dated 8-23-1865. The Surveyor's general notes state, "set ¼ section post, drove charred stake, dug pits and raised mounds as per instructions." In 1971 as shown on survey No. H-8-A, Streamer set a ½" x 24" iron pin at the split of the measured distance between the section corner South and the found 3/8" shaft at the North 1/16 corner which ½" iron pin was coincidentally also at the mid point between the Northeast and Southeast corners of section 22.

Monument(s) & Accessories Found (Condition & Source):

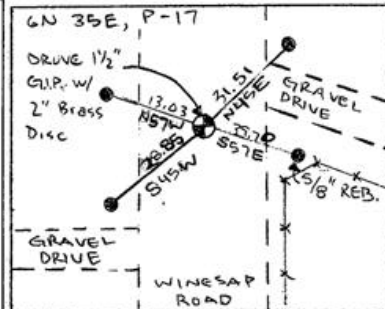
At the west quarter corner of section 23, T6N R35E, we found ½" smooth pin at the pavement surface.

Monument Set (Procedures & Description):

Drove ½" pin to 3" depth. Drove 1 ½" x 15 ½" galvanized iron pipe around pin placed 8" of concrete around the pipe. Then filled the pipe with concrete and set 2" brass disc on the top of the pipe at ¼" below the surface pavement stamped (see example below)



Monument Detail:



New Accessories: WE SET:

A 5/8 rebar with yellow plastic cap stamped 'Tomkins Surveying' which bears N 45° E ~ 31.51 from the corner. Attached a Umatilla County Bearing object to a t-post. A 5/8 rebar with yellow plastic cap stamped 'Tomkins Surveying' which bears S 57° E ~ 39.70 feet from the corner. Attached a Umatilla County Bearing object to the northwest face of power pole. A 5/8 rebar with yellow plastic cap stamped 'Tomkins Surveying' which bears S 45° W ~ 28.85 feet from the corner. No Umatilla County Bearing object sign or t-post set. A 5/8 rebar with yellow plastic cap stamped 'Tomkins Surveying' which bears N 57° W ~ 13.03 feet from the corner. No Umatilla County Bearing object sign or t-post set.

Location & Comments:

Compass Declination:

19° East

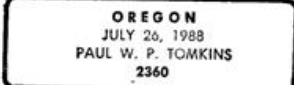
Firm/Agency: Tomkins Land Surveying, Inc.
 20 E. Poplar, Suite 204
 Walla Walla, WA 99362

Party Chief: Bryan Martin
Notes: Bryan Martin
Witness: Eric Flowers

Surveyor's Seal



Paul W. P. Tomkins



renewed 6/30/04
6/30/02

03-23-0