

**OREGON CORNER RESTORATION FORM**

**Section:** 21 & 28  
**Township:** 6 North  
**Range:** 35 East of the Willamette Meridian  
**County:** Umatilla  
**Date:** June 1, 2002

**Corner Indexing Information:** Township 6N Range 35E Corner Code R 11 (Willamette Meridian)  
**Additional Identifier:** (e.g. BLM designation for the corner, street intersection, plat name, block, lot, etc.)

This quarter corner is common to sections 21 & 28.

**Oregon Plane Coordinates:** N: 848789.828 E: 8724680.605

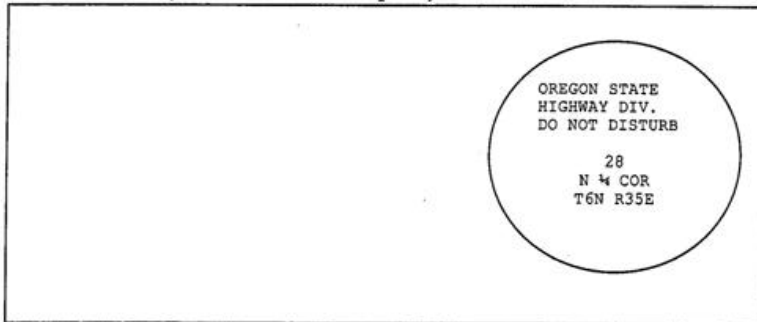
**Zone:** North **Order:** second **Datum:** NAD83-91 **Convergence:** 1°27'28.1" **Scale Factor:** .99995415

**Previous Renewals/Surveys, etc.:** Originally surveyed by U.S. Deputy Surveyor William Odell under his contract No. 110, dated 8-23-1865. The Surveyor Generals notes state, "set ¼ section corner post, drove charred stake, dug pits, and raised mounds as per instructions." Survey No. 53, Book 1, Page 256, Arnold set a basalt stone 22"x18"x10", 18" in the ground at the surveyed position. Survey I-4, Dwyer set a nail at the surveyed position. Circa 1995, the Oregon Department of Transportation resurfaced the road and set a brass disk in a monument case.

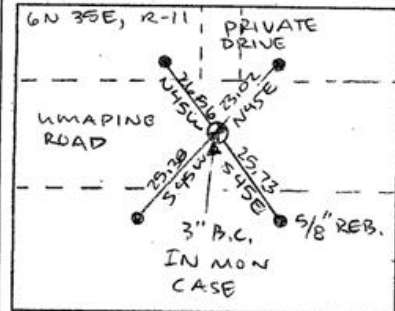
**Monument(s) & Accessories Found (Condition & Source):**

At the south quarter of section 21, T6N R35E, we found a 3" brass cap in 5" diameter iron monument case 2 ½" below the surface with no lid.

**Monument Set (Procedures & Description):**



**Monument Detail:**



**New Accessories: WE SET:**

A 5/8 rebar with yellow plastic cap stamped 'Tomkins Surveying' which bears N 45°E ~ 23.02 from the corner. No Umatilla County Bearing object sign or t-post set. A 5/8 rebar with yellow plastic cap stamped 'Tomkins Surveying' which bears S 45°E ~ 25.73 feet from the corner. No Umatilla County Bearing object sign or t-post set. A 5/8 rebar with yellow plastic cap stamped 'Tomkins Surveying' which bears S 45°W ~ 25.38 feet from the corner. No Umatilla County Bearing object sign or t-post set. A 5/8 rebar with yellow plastic cap stamped 'Tomkins Surveying' which bears N 45°W ~ 26.56 feet from the corner. Attached a Umatilla County Bearing object to the southeast face of a power pole.

**Location & Comments:**

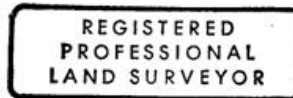
**Compass Declination:**

19° East

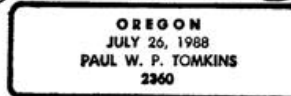
**Firm/Agency:** Tomkins Land Surveying, Inc.  
 20 E. Poplar, Suite 204  
 Walla Walla, WA 99362

**Party Chief:** Bryan Martin  
**Notes:** Bryan Martin  
**Witness:** Eric Flowers

**Surveyor's Seal**



*Paul W. P. Tomkins*



*renew 6/30/09  
 6/30/02*