

OREGON CORNER RESTORATION FORM

Section: 24 & 25
Township: 6 North
Range: 35 East of the Willamette Meridian
County: Umatilla
Date: June 1, 2002

Corner Indexing Information: Township 6N Range 35E Corner Code R 23 (Willamette Meridian)
Additional Identifier: (e.g. BLM designation for the corner, street intersection, plat name, block, lot, etc.)

This quarter corner is common to sections 24 & 25.

Oregon Plane Coordinates: N: 849285.837 E: 8740481.397

Zone: North Order: second Datum: NAD83-91 Convergence: 1°30'06.8" Scale Factor: .99995118

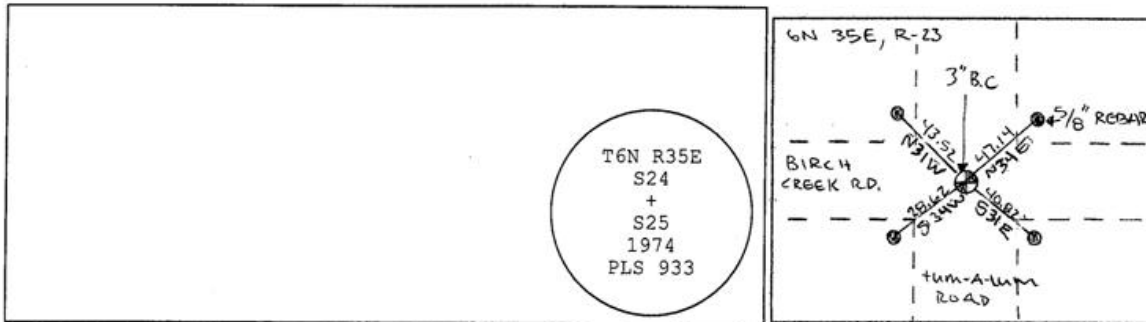
Previous Renewals/Surveys, etc: Originally surveyed by U.S. Deputy Surveyor William Odell under his contract No. 110, dated 8-23-1865. The Surveyor's generals notes state, "set 1/4 section post corner, dug pits and raised mounds as per instructions." As shown on Survey Book 1, Page 273, dated September 5, 1893, Arnold found a stone 18"x18"x6" marked 1/4 with a "+" on top. Survey Q 832-A, dated 12-4-1954 by Hayes shows that the corner and the references where set, but does not show what was set. Survey I165-B, dated 12-10-1974, Krumbein set a 2 1/2" brass cap from information on previous survey.

Monument(s) & Accessories Found (Condition & Source):

At the south quarter corner of section 24, T6N R35E, we found a 3" brass cap 8" below the surface.

Monument Set (Procedures & Description):

Monument Detail:



New Accessories: WE SET:

A 5/8 rebar with yellow plastic cap stamped 'Tomkins Surveying' which bears N 34°E ~ 47.14 from the corner. Attached a Umatilla County Bearing object to the southwest face of a power pole. A 5/8 rebar with yellow plastic cap stamped 'Tomkins Surveying' which bears S 31°E ~ 40.82 feet from the corner. No Umatilla County Bearing object sign or t-post set. A 5/8 rebar with yellow plastic cap stamped 'Tomkins Surveying' which bears S 34°W ~ 28.62 feet from the corner. No Umatilla County Bearing object sign or t-post set. A 5/8 rebar with yellow plastic cap stamped 'Tomkins Surveying' which bears N 31°W ~ 43.52 feet from the corner. Attached a Umatilla County Bearing object to the southeast face of a guy pole.

Location & Comments:

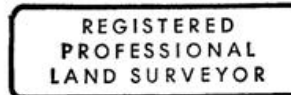
Compass Declination:

19° East

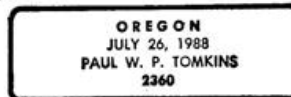
Firm/Agency: Tomkins Land Surveying, Inc.
20 E. Poplar, Suite 204
Walla Walla, WA 99362

Party Chief: Bryan Martin
Notes: / Bryan Martin
Witness: Eric Flowers

Surveyor's Seal



Handwritten signature of Paul W. P. Tomkins



renews 6/30/04
6/30/02

03-23-C