

OREGON CORNER RESTORATION FORM

COUNTY: Umatilla. DATE: 02/20/08.

CORNER DESIGNATION: R-1, the Northwest Corner of Section 30, Township 6 North, Range 36 East, W.M..

PREVIOUS RENEWALS/SURVEYS ETC.: Corner was originally established by Odell & Lewis, under GLO Contract No. 110, dated February 7, 1865. Notes state: "Set Post Corner for Secs. 24, 25, 30 & 19 on a level. Drove charred stake, dug pits, raised mound as per instructions". John Kimbrell, in a survey diagram at Record of Private Surveys, Book 1, Page 315, shows the corner point was measured through, but there is no indication of a monument set.

J.C Arnold, in his survey recorded at Record of Private Surveys, Book 1, Page 273, dated September 11, 1893, states he found a stone, claimed to have been set by J.W. Kimbrell. Arnold measured North to the Northwest Corner of Section 19 where he recovered a corner. Arnold indicates he calculated the position rather than accepting Kimbrells stone, which was within 0.3' of his proportioned point.

Ron Munns set a "reference point" to this corner, a 1" pipe, on his Survey No. 86-104-B. Munns clearly indicates the pipe was not the corner.

MONUMENT AND ACCESSORIES FOUND: None. The corner area was thoroughly searched and probed with a steel rod. The corner are falls just west of a irrigation ditch in a farmed area.

MONUMENT MARKING DETAIL:

T6N
R35E R36E
S24|S19
S25|S30
2008
PLS 1106

MONUMENT SET:

Corner point was reestablished by single proportion measure between the accepted West one-quarter corner of Section 30 and accepted Northwest Corner of Section 19. At reestablished corner point, set a 2 3/8" brass monument on a 1 1/4" x 30" galvanized iron pipe, marked as shown in "Monument Marking Detail". The cap is buried 18" below ground line.

New accessories:

A 2" iron pipe by irrigation gate valve on East side ditch bears North 21° East, 37.2 feet, pipe is 6 feet high, wired a bearing object sign to pipe 4 feet above ground.

A 26" School marm black walnut bears South 02° West, 68.9 feet, measured to nail and 3/4" brass washer stamped "PLS 1106", nailed to North face of tree, 1.5' above ground. Nailed bearing object and witness signs to the tree.

A irrigation riser in 4 inch PVC pipe bears North 34° West, 46.3 feet.

The 1" iron pipe by Munns Survey No. 86-104-B bears S 07°08'E, 22.0 feet.

LOCATION AND COMMENTS: Corner falls 7 feet West of the centerline of an North-South irrigation ditch.

OREGON STATE PLANE COORDINATE, North Zone, NAD 83(91), International Feet:

N = 849332.42

E = 8743164.29

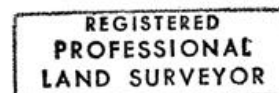
FIRM: Wells Surveying
P.O. Box 1696
Pendleton, OR 97801

COMPASS DECLINATION: 18° East

Surveyor's Seal

Witnesses: Jason Wells, LSIT

\6N36R-1



Will R. Wells
OREGON
JULY 22, 1977
WILLIAM R. WELLS
1106

renews 6-30-08

08-49-B