

PAUL W.P. TOMKINS, L.S.
 LAND CORNER RECORD
 UMATILLA County

T 6N, R 35E., W.M.
 Segregated Surveys:

Corner Code No. T25

Name: EAST 1/4 CORNER SECTION 25

Corner No.:

DLC, HES, Tract, Mining Claim, Indian Allotment, Federal

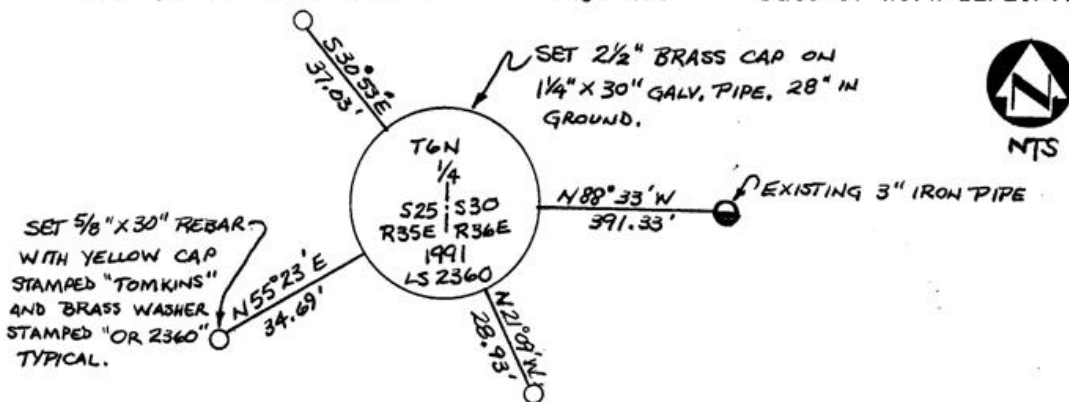
1. History of Corner Establishment and Subsequent Restoration:

CORNER WAS ORIGINALLY ESTABLISHED AS CHARRED STAKE WITH PITS AND MOUND BY GLO SURVEYORS ODELL AND LEWIS IN 1865. ON 1973 SURVEY BY G. STREAMER (UMATILLA COUNTY SURVEY NO. I-99) WAS FOUND A 1" IRON PIN.

2. Description of Evidence Found:

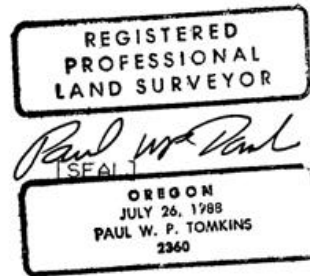
A 3/4" IRON PIN LOCATED WITHIN 0.2' OF RECORD DISTANCE TO A STONE MONUMENT, AT THE SOUTH 1/16 OF SECTION 25.

3. Describe Monument, Accessories, and Corollary Data to Perpetuate this Corner Location. Diagram corner, indicate meridian and reference to map of Record. Surveyor's Field Book No. Page No. Date of Work 12/26/91



Oregon Plane Coordinates: North Zone, Y
 Order Accuracy. Derived From:

X



Pin Pointed on Photo No. Date Located at

SURVEYOR'S CERTIFICATE

This corner record correctly represents work performed by me or under my direction in compliance with the provisions of the laws of the State of Oregon.

Date ..12/26/91.....

Signature *Paul W.P. Tomkins*

Certificate No. 2360

RECEIVED BY
 Umatilla County Surveyor
 Date 1-92
 Rec'd By KR
 No. 92-03-C