

OREGON CORNER RESTORATION FORM

Section: 27,28,33,34
Township: 6 North
Range: 35 East of the Willamette Meridian
County: Umatilla
Date: June 28, 2002

Corner Indexing Information: Township 6N Range 35E Corner Code V 13 (Willamette Meridian)

Additional Identifier: (e.g. BLM designation for the corner, street intersection, plat name, block, lot, etc.)

This corner is common to sections: 27,28,33,34.

Oregon Plane Coordinates: N: 843533.928 E: 8727477.708

Zone: North **Order:** second **Datum:** NAD83-91 **Convergence:** 1°27'54.8" **Scale Factor:** .99994795

Previous Renewals/Surveys, etc.: Originally surveyed by U.S. Deputy Surveyor William Odell under contract No. 110 dated 8/23/1865. The Surveyor Generals notes state "set post corner, drove charred stake, dug pits and raised mounds per instructions". In 1962 on survey Q-835-C Harris found a stone and raised a 5/8" iron pin. In 1974 on survey I-90, Streamer found a nail. In 1991 on survey No. 91-081-B Tomkins Land Surveying found a 1/2" rebar 12" below the surface per survey Q-835-C and set a railroad spike with a punch at the surface over it.

Monument(s) & Accessories Found (Condition & Source):

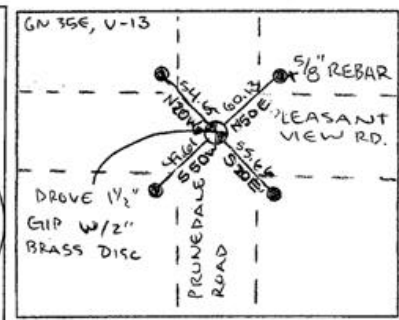
At the southwest corner of section 27, T6N R35E, we found a railroad spike 3" below the surface pavement.

Monument Set (Procedures & Description):

Removed railroad spike and drove 1 1/2"x 15 1/2" galvanized iron pipe. Placed 10" of concrete around the pipe and filled the pipe with concrete and set 2" brass disc on top of pipe at 1/2" below surface pavement stamped (see example below)

T6N R35E
 LS 2360
 S28 S27
 S33 S34
 2001

Monument Detail:



New Accessories: WE SET:

A 5/8 rebar with yellow plastic cap stamped 'Tomkins Surveying' which bears N 50°E ~ 60.13 from the corner. Attached a Umatilla County Bearing object to the south face of power pole. A 5/8 rebar with yellow plastic cap stamped 'Tomkins Surveying' which bears S 20°E ~ 55.66 feet from the corner. Attached a Umatilla County Bearing object to the northwest face of power pole. A 5/8 rebar with yellow plastic cap stamped 'Tomkins Surveying' which bears S 50°W ~ 49.61 feet from the corner. Attached a Umatilla County Bearing object to a t-post. A 5/8 rebar with yellow plastic cap stamped 'Tomkins Surveying' which bears N 20°W ~ 54.65 feet from the corner. Attached a Umatilla County Bearing object to the east face of stop road signpost.

Location & Comments:

Compass Declination:

19° East

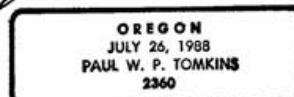
Firm/Agency: Tomkins Land Surveying, Inc.
 20 E. Poplar, Suite 204
 Walla Walla, WA 99362

Party Chief: Bryan Martin
Notes: Bryan Martin
Witness: Eric Flowers

Surveyor's Seal



Paul W. P. Tomkins



*renews 6/30/04
6/30/02*