

PAUL W.P. TOMKINS, LAND SURVEYOR
LAND CORNER RECORD

UMATILLA County

T 06N, R 35E., W.M.

Corner Code No. V-23

Segregated Surveys:

Name: NORTH 1/4 CORNER SECTION 36

Corner No.:

Reserve, Townsite

DLC, HES, Tract, Mining Claim, Indian Allotment, Federal

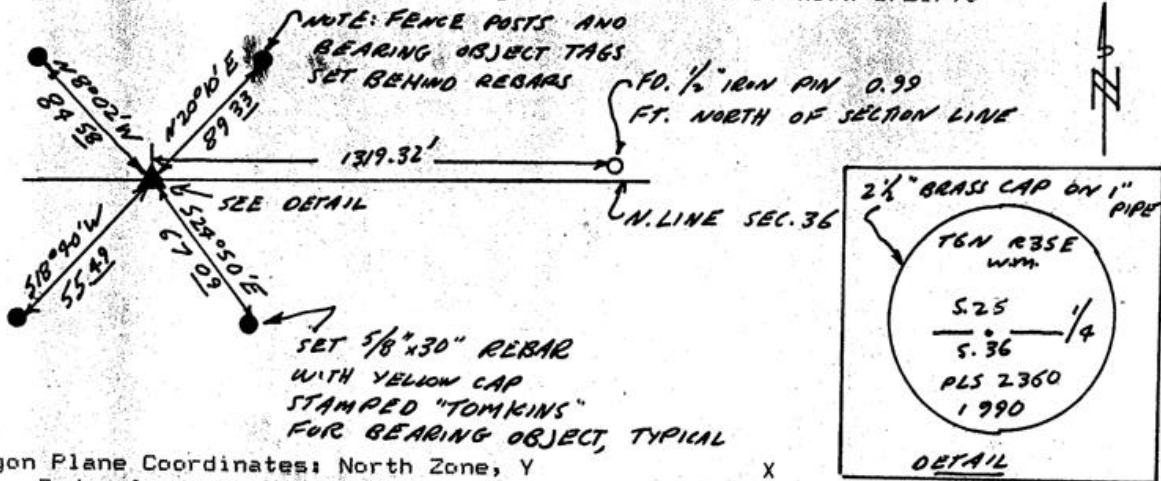
1. History of Corner Establishment and Subsequent Restoration:

CORNER ORIGINALLY ESTABLISHED AS A "CHARRED STAKE WITH DUG PITS AND RAISED MOUND" BY GLO SURVEYORS ODELL AND LEWIS IN 1865. CORNER WAS NOTED BY NEWBILL IN 1960 AS AN IRON BAR 1319.32' WEST OF A 1/2" IRON PIN, AND AGAIN BY WALLULIS IN 1962 AS A PIPE 1319.32' WEST OF A "1/2" PIN OFF LINE."

2. Description of Evidence Found:

NO EVIDENCE FOUND. A 1/2" IRON PIN 1/4 MILE TO EAST, 2" BELOW EAST SIDE COUNTY ROAD PAVEMENT WAS FOUND.

3. Describe Monument, Accessories, and Corollary Data to Perpetuate this Corner Location. Diagram corner, indicate meridian and reference to map of Record. Surveyor's Field Book No. Page No. Date of Work 8/21/90



Oregon Plane Coordinates: North Zone, Y
Order Accuracy. Derived From:

Pin Pointed on Photo No. Date Located at

SURVEYOR'S CERTIFICATE

This corner record correctly represents work performed by me or under my direction in compliance with the provisions of the laws of the State of Oregon.

Date 8/21/90

Signature Paul W.P. Tomkins

REGISTERED
PROFESSIONAL
LAND SURVEYOR

Paul W.P. Tomkins

OREGON
JULY 26, 1988
PAUL W. P. TOMKINS
2360

Certificate No. 2360

RECEIVED BY
Umatilla County Surveyor

No. 90-64-B

PAUL W.P. TOMKINS, LAND SURVEYOR
 LAND CORNER RECORD

UMATILLA County

T 06N, R 35E., W.M.
 Segregated Surveys:

Corner Code No. V-23

Name: NORTH 1/4 CORNER SECTION 36

Corner No.:

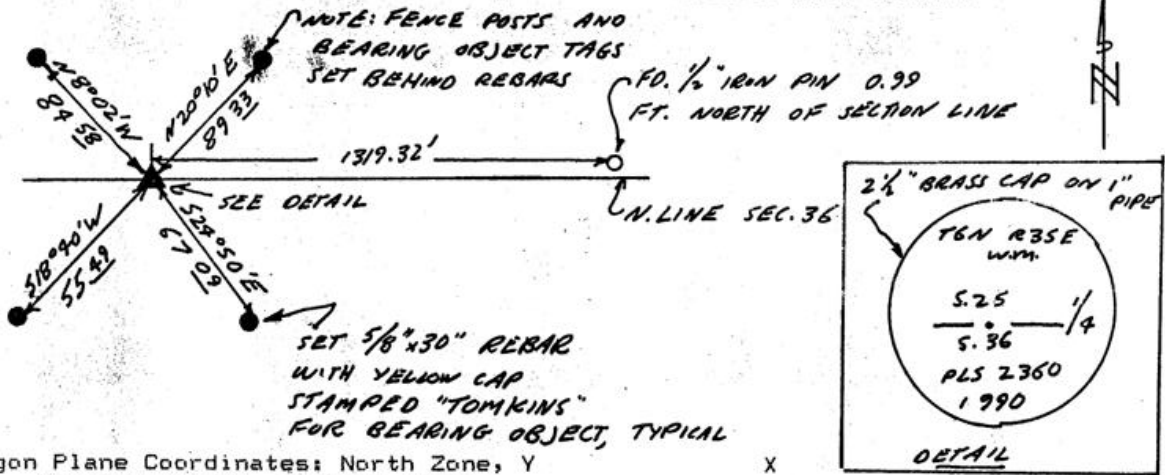
Reserve, Townsite

DLC, HES, Tract, Mining Claim, Indian Allotment, Federal

1. History of Corner Establishment and Subsequent Restoration:
 CORNER ORIGINALLY ESTABLISHED AS A "CHARRED STAKE WITH DUG PITS
 AND RAISED MOUND" BY GLO SURVEYORS ODELL AND LEWIS IN 1865. COR-
 NER WAS NOTED BY NEWBILL IN 1960 AS AN IRON BAR 1319.32' WEST OF A
 1/2" IRON PIN, AND AGAIN BY WALLULIS IN 1962 AS A PIPE 1319.32'
 WEST OF A "1/2" PIN OFF LINE."

2. Description of Evidence Found:
 NO EVIDENCE FOUND. A 1/2" IRON PIN 1/4 MILE TO EAST, 2" BELOW EAST
 SIDE COUNTY ROAD PAVEMENT WAS FOUND.

3. Describe Monument, Accessories, and Corollary Data to Perpetuate this Corner
 Location. Diagram corner, indicate meridian and reference to map of Record.
 Surveyor's Field Book No. Page No. Date of Work 8/21/90



Oregon Plane Coordinates: North Zone, Y
 Order Accuracy. Derived From:

Pin Pointed on Photo No. Date Located at

SURVEYOR'S CERTIFICATE

This corner record correctly represents work performed by me or under my direction in compliance with the provisions of the laws of the State of Oregon.

Date 8/21/90

Signature Paul W.P. Tomkins

REGISTERED PROFESSIONAL LAND SURVEYOR

Paul W.P. Tomkins

OREGON JULY 26, 1988 PAUL W. P. TOMKINS 2360

Certificate No. 2360

RECEIVED BY

Umatilla County Surveyor
 Date 9-8-90
 Rec'd by RA
 No. 90-69-B