

OREGON CORNER RESTORATION FORM

Section 36/31 Township 6N Range 35/36

County Umatilla Date 5/17/95

CORNER DESIGNATION

1/4  
S36 | S31  
R35E | R36E

- Condition Report Only
- Not Found
- Renewed
- Unrecorded
- Surveyed In
- Referenced Out

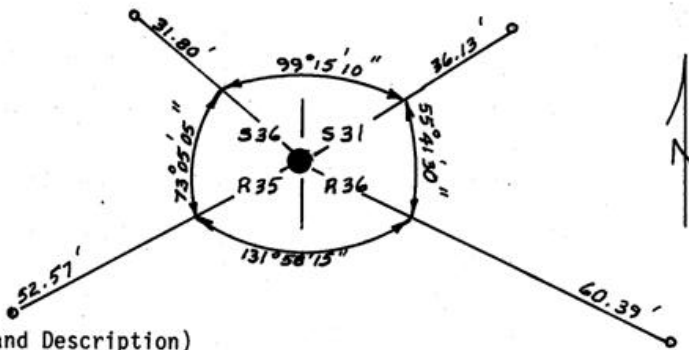
Previous Renewals/Surveys, etc. Streamer found 1/2 inch iron pin in 1973; Krumbein set 2 1/2 inch Brass Cap in 1980.

Monument(s) & Accessories Found: (Condition and Source)

Found 2 1/2" Brass Cap approximately 6" below pavement.  
Set by Krumbein in 1980. No accessories found.

Monument Detail

Sketch



Monument Set (Procedures and Description)

New Accessories

Set 4 5/8" x 30" iron pins with yellow plastic caps marked "UMA CO R D LS 2627" in each quadrant (see Sketch). Reference tags were set near each pin. Distances were measured from the Brass Cap to the pins; angles were turned between the pins.

Location & Comments

Located at the inter-  
section of Telephone  
Pole & Grant Road 1/2  
mile east of Milton-  
Freewater

Compass Declination \_\_\_\_\_  
Firm/Agency Umatilla County Road Dept.

Surveyor's Seal

RECEIVED BY  
Umatilla County Surveyor

Date 5-95  
Rec'd by KK  
No. 95-77-R

Address 3920 Westgate  
Pendleton, Oregon 97801  
Party Chief Gary Roberts  
Notes Gary Roberts  
Witness Chris Amsberry

