

# OREGON CORNER RESTORATION FORM

Section 33 Township 6N  
 County Umatilla Date: 12-24-02

Range 35E

Corner Designation: 6N35Z11

Condition Report Only  
 Not Found  
 Remonumented  
 Unrecorded  
 Surveyed In  
 Referenced Out

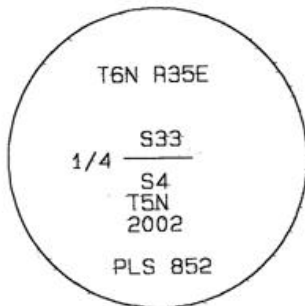
**Previous Renewals / Surveys, etc.**

This corner was established by Odell and Lewis under Contract 110 dated Feb. 7, 1865. The corner was monumented with posts and pits.  
 In or before 1879, the Oregon-Washington Railroad & Navigation Company tied the corner monument from station 376+00 at an angle right of 252°25' at 1983.00 feet. My copy of this survey is dated 1916.  
 In 1948, Robnette under survey 86-130-A, recorded finding a stone monument and accepted it as the corner. Robnette's survey gave a tie to that stone and to the railroad.  
 In 1991, PLS 2360 under survey 91-81-B, recorded this corner as not found.

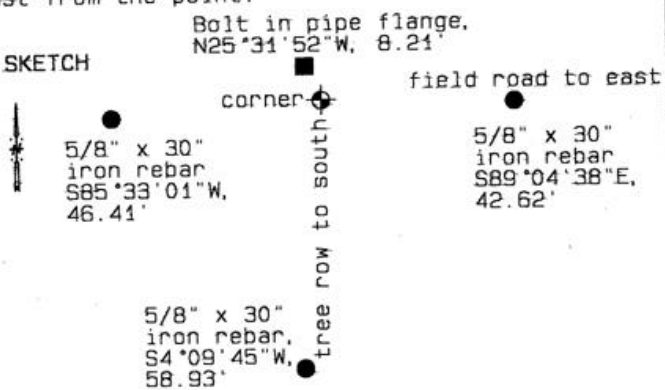
**Monument and Accessories Found: ( condition and source )**

Found a 6" x 6" x 3" stone with a 1 1/2" "X" chiseled on the stone. The stone was in the ground at the base of a 1940's style fence post with an old survey lath alongside.  
 The hole was at the north end of a line of trees between two different orchards. The hole had cut off tree routes to find the stone. A road between two orchards goes east from the point.

**DIAGRAM**



**SKETCH**



**MONUMENT (S) AND ACCESSORIES SET (Procedures and Description)**

Set a 1.25" by 30" galvanized iron pipe with 2.5" brass cap stamped as shown in the diagram.

**REFERENCES SET:**

Set three 5/8" by 30" iron rebars with red plastic cap stamped ORLS 852 and WALS 13922. Tied most southerly bolt at bottom of irrigation riser and valve assembly.

Made GPS tie to TRI Station	Oregon State Plane Coord. - North Zone
Latitude	Northing
Longitude	Easting
NAD 83(1991)	Ortho Height
	Ellipsoidal Height

Location and Comments	Compass Declination	Surveyors Seal
	20 °E	

From Barrett Elevator, cross railroad tracks and follow roads through grape vineyard to a point due east from the Elevator 2000 feet.

REGISTERED  
PROFESSIONAL  
LAND SURVEYOR

**RECEIVED BY:**

Firm / Agency

*David L. Haddock*

Date: 12-02  
 Rec'd By: KE  
 No. 02-299-R

Haddock Surveying  
 P. O. Box 1574  
 Pendleton, OR 97801  
 (541) 276-2174

OREGON  
JULY 12, 1968  
DAVID L. HADDOCK  
852

RENEWS 6-30-03