

**OREGON CORNER RESTORATION FORM**

COUNTY: Umatilla. DATE: 07/31/08

CORNER DESIGNATION: L-21, The East One- Quarter Corner Section 14, Township 6 North, Range 36 East, W.M..

PREVIOUS RENEWALS/SURVEYS ETC: Corner originally set by Odell & Lewis under GLO Contract No. 110, dated February 7, 1865. Notes state: Set post Cor. for fractional Secs. 13 & 14.

Bartleson, in his Survey No. 99-282-B calculated this section line but not the corner point.

MONUMENT AND ACCESSORIES FOUND: None. Corner falls in a North-South field line.

**MONUMENT MARKING DETAIL:**

T6N R36E  
1/4  
S14 | S13  
2008  
PLS 1106

MONUMENT SET: To reestablished this corner point, I held the existing old North-South field line for departure. For latitude, I calculated the record proportional latitude between the recovered East One-Quarter of Section 23 and the Northeast Closing Corner of Section 14, based on the Odell and Lewis record. At the reestablished corner point, set a 2 3/8" brass cap on a 1 1/4" x 24" galvanized iron pipe with cap buried 18" below ground level in a field line. Cap marked as shown in "Monument Marking Detail".

**New accessories:**

- A 3/4" brass washer on a power pole, 1' above ground level bears North 04° East, 152.2 feet, with bearing object and witness signs attached to pole.
- A purple deep-1 magnet bears South 53° West, 32.5 feet.
- A blue deep-1 magnet bears North 87° West, 30.6 feet.
- An orange deep-1 magnet bears North 28° West, 42.1 feet.
- All deep-1 magnets are buried 20" below ground level with bearing object tags.

LOCATION AND COMMENTS: Corner is in North-South field line. A Power pole line runs North-South along the field line.

OREGON STATE PLANE COORDINATE, North Zone, NAD 83(91), International Feet:

N = 857971.78  
E = 8769506.00

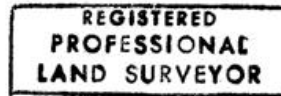
FIRM: Wells Surveying  
P.O. Box 1696  
Pendleton, OR 97801

COMPASS DECLINATION: 18° East

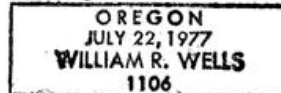
Surveyor's Seal

Witnesses: Jason Wells, LSIT

\6N36L21



*William R. Wells*



*Renews 6-30-10*

*09-10-C*