

OREGON CORNER RESTORATION FORM

COUNTY: Umatilla. DATE: 02/25/08

CORNER DESIGNATION: N-7, The North One-Quarter Corner Section 20, Township 6 North, Range 36 East, W.M..

PREVIOUS RENEWALS/SURVEYS ETC.: Corner originally established by Odell & Lewis, under GLO Contract No. 110, dated February 7, 1865. Notes state: Set 1/4 Sec. post. Dug pits & raised mound, as per instructions.

J. H. Raley, County Surveyor, recovered this corner in survey Recorded in Book 1, Page 51, Record of Private Surveys. Raley does not state what was found for the corner.

Don Staebler did not recover this corner and calculated a position for it, mid-way between the Northeast and Southeast Corners of Section 20 in his Survey No. K-29-B, in 1974.

MONUMENT AND ACCESSORIES FOUND: None.

MONUMENT MARKING DETAIL:

T6N R36E
1 S17
4 S20
2008
PLS 1106

MONUMENT SET: Corner point was reestablished by single proportionate measure between the accepted Northwest and Northeast Corners of Section 20. At the reestablished corner point, set a 2 3/8" brass cap on a 1 1/4" x 30" galvanized iron pipe, with cap 8" below ground level, marked as shown in "Monument Marking Detail".

New accessories:

- A 3/4" brass washer, 1 foot above ground level in the West side of a Pacific Power & Light pole #174060, bears South 78° East, 63.2 feet, bearing object sign attached.
- A 3/4" brass washer, 1 foot above ground level in the Northwest side of a Railroad Crossing Sign, bears S 29 1/2 ° E, 40.2 feet, bearing object sign attached.
- A 5/8" x 24" iron rebar with a red plastic cap stamped "OR PLS 1106, WA PLS 17372" bears North 45 1/2 ° East, 49.7 feet, with bearing object sign attached.
- An irrigation riser at the Southeast corner of an alfalfa field bears N 79 1/2 ° West a distance of 43.5 feet, with bearing object sign attached.

LOCATION AND COMMENTS: Located on railroad fill at the West edge of ballast on West side of track. Centerline of track is 7.8 feet East of Corner. Corner is about 50 feet North of the intersection of Elliot Road with said railroad track.

OREGON STATE PLANE COORDINATE, North Zone, NAD 83(91), International Feet:

N = 854766.09
E = 8750886.56

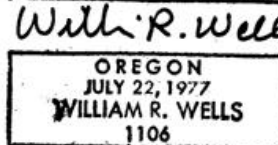
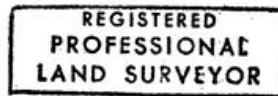
FIRM: Wells Surveying
P.O. Box 1696
Pendleton, OR 97801

COMPASS DECLINATION: 18° East

Surveyor's Seal

Witnesses: Jason Wells, LSIT

\6N36N7



RENEWS 6-30-10

09-10-e