

OREGON CORNER RESTORATION FORM

COUNTY: Umatilla. DATE: 04/10/08

CORNER DESIGNATION: T-25, The East One-Quarter Corner of Section 25, Township 6 North, Range 36 East, W.M.

PREVIOUS RENEWALS/SURVEYS ETC.: Corner originally established by Odell & Lewis under GLO Contract No. 110, dated February 7, 1865. Notes state: Set 1/4 Sec. post. Drove charred stake; dug pits & raise mound, as per instructions.

MONUMENT AND ACCESSORIES FOUND: None.

MONUMENT MARKING DETAIL:

T6N
R36E R37E
1/4
S25 | S30
2008
PLS 1106

MONUMENT SET: Corner was reestablished by single proportion measure between the accepted Northeast Corner of Section 25 and the accepted Southeast Corner of Section 25. At reestablished corner point, set 2 3/8" brass cap on a 1 1/4" x 30" galvanized iron pipe with cap 22 inches below ground level, marked as shown in "Monument Marking Detail".

New accessories:

A silver deep-1 magnet bears North 35° East, 28.9 feet.

A purple deep-1 magnet bears South 50 1/2° East, 31.1 feet.

A blue deep-1 magnet bears South 35 1/2° West, 32.0 feet.

An orange deep-1 magnet bears North 57° West, 28.6 feet.

Deep-1 magnets are buried 20" below ground level with bearing object signs.

LOCATION AND COMMENTS: No features nearby, falls on top of ridge in wheat field.

OREGON STATE PLANE COORDINATE, North Zone, NAD 83(91), International Feet:

N = 847625.18

E = 8775105.04

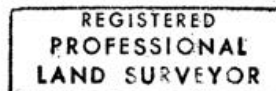
FIRM: Wells Surveying
P.O. Box 1696
Pendleton, OR 97801

COMPASS DECLINATION: 18° East

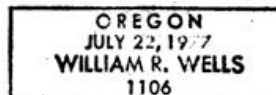
Surveyor's Seal

Witnesses: Jason Wells, LSIT

\6N36T25



William R. Wells



Expires 6-30-10

09-10-C