

# OREGON CORNER RESTORATION FORM

COUNTY: Umatilla. DATE: 04/17/07

CORNER DESIGNATION: Z-5, The Southeast Corner of Section 31, Township 6 North, Range 36 East, W.M..

PREVIOUS RENEWALS/SURVEYS ETC.: Corner originally established by Odell & Lewis under GLO Contract No. 110, dated February 7, 1865. Notes state: Set post Cor. for Secs, 5, 6, 31, & 32 on level. Drove charred stake; dug pits & raised mound, as per instructions. John Kimbrell, in his survey recorded at Book 1, Page 402, Record of Private Surveys, indicates he recovered this corner, then surveyed North and found the Northeast Corner of Section 31, then returned South and reestablished the 1/4 corner common to Sections 31 and 32. Kimbrell also tied the railroad track South of the Northeast corner of Section 31. Steve Haddock, in his Survey No. 08-039-C, reestablished the Northeast corner of Section 31 with reference to Kimbrell's call to the railroad track South of the Northeast Corner. The 1956 ASCS aerial photos in this area show the corner in the middle of a wheat field with no nearby occupation features such as field or fence lines.

MONUMENT AND ACCESSORIES FOUND: None. Falls in farmed fields.

## MONUMENT MARKING DETAIL:

T6N R36E  
S31 | S32  
S6 | S5  
T5N  
2008  
PLS 1106

MONUMENT SET: I held the record angle of  $91^{\circ}00'59''$  turned at the Northeast Corner of Section 31, from the North line of Section 32, per Haddock Survey No. 08-039-C, to determine the bearing of East line of Section 31. I projected John Kimbrell's record distance of 80.76 chains, (5330.16') along the East line of Section 31 to determine the corner point. This position is in harmony with the location of the Southeast Corner of Section 32 in both distance and bearing. I felt it mandatory to use this method because the Odell & Lewis record has a large distance blunder on the closing  $\frac{1}{2}$  mile on the South line of Section 31, undoubtedly caused by Odell and Lewis not "closing" to the Township Corner. At the reestablished corner point, set a  $2 \frac{3}{8}$ " brass cap on a  $1 \frac{1}{4}$ " x 30" galvanized iron pipe with the cap buried 19" below ground level, marked as shown in "Monument Marking Detail".

New accessories:

A silver deep-1 magnet bears North  $54 \frac{1}{2}^{\circ}$  East, 26.9 feet.  
A purple deep-1 magnet bears South  $19 \frac{1}{2}^{\circ}$  East, 31.4 feet.  
A blue deep-1 magnet bears South  $57 \frac{1}{2}^{\circ}$  West, 32.5 feet.  
An orange deep-1 magnet bears North  $25 \frac{1}{2}^{\circ}$  West, 29.4 feet.  
Magnets buried 20" below ground level with bearing object signs.

LOCATION AND COMMENTS: Exposed "U" portion of North-South irrigation main line bears South  $46^{\circ}$  East about 120 feet more or less, top is out of ground. Corner located about 100 feet East of irrigation main line running North-South. A road around a center pivot is 100 feet North. Corner falls in a farmed field.

OREGON STATE PLANE COORDINATE, North Zone, NAD 83(91), International Feet:

N = 838791.54

E = 8748793.53

FIRM: Wells Surveying

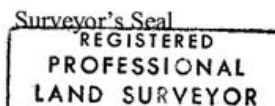
P.O. Box 1696

Pendleton, OR 97801

COMPASS DECLINATION:  $18^{\circ}$  East

Witnesses: Jason Wells, LSIT

\6N36Z5



*William R. Wells*

OREGON JULY 22, 1977 WILLIAM R. WELLS 1106
---

09-10-C