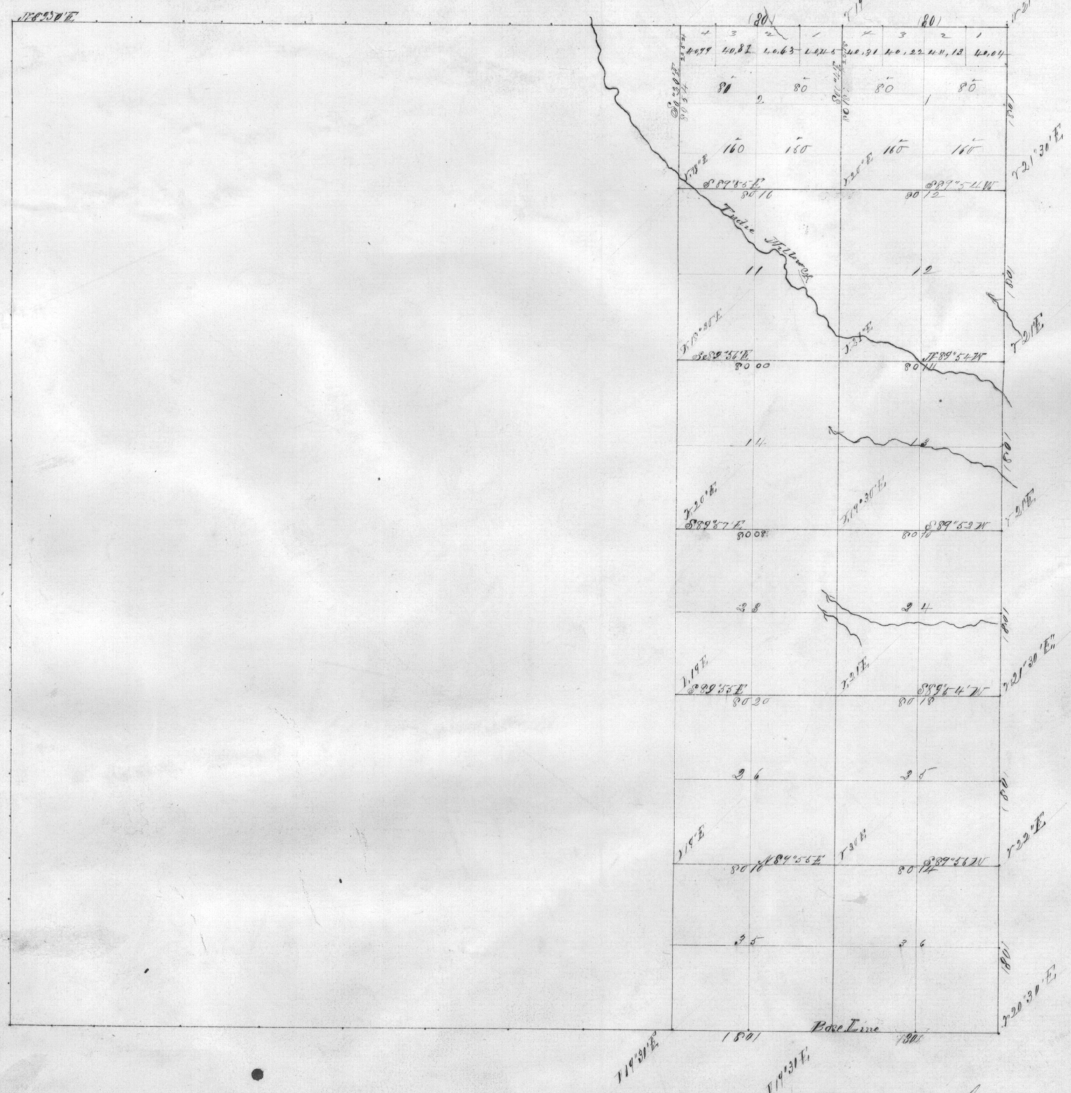


Area	Acres
1	62.500
2	62.500
3	62.500
4	62.500
5	62.500
6	62.500
7	62.500
8	62.500
9	62.500
10	62.500
11	62.500
12	62.500
13	62.500
14	62.500
15	62.500
16	62.500
17	62.500
18	62.500
19	62.500
20	62.500
21	62.500
22	62.500
23	62.500
24	62.500
25	62.500
26	62.500
27	62.500
28	62.500
29	62.500
30	62.500
Total	2682.50



General Description
of the land in this township is taken
from the 30th and 31st of the 1874 map

The Standard
of the Survey is the 1874 map

Scale of chains to an inch

Case	Recorder	No.	Recorded	Dist. Surveyed	Approved	Completed
subdivision	Geo. Hendry	125	Apr 23 ^d 1874	01 74	May 24 th 1874	May 24 th 1874

The above map of the Subdivisional lines of T. 1 N. R. 3 E.
with this system is strictly conformable to the original field notes
of the survey of 1874 and is in full accordance with the original
and approved
Surveyor General's Office W. H. Colby
Chicago City Nov 14 1874