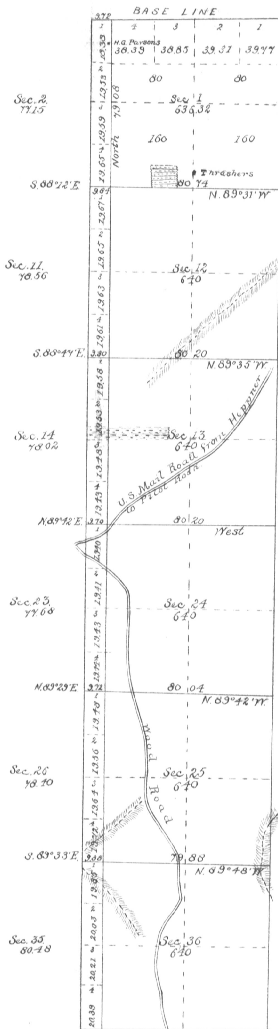
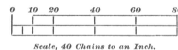


Township No. 1 South Range No. 30½ East Willamette Meridian, Oregon.



Total number of Acres 1306.61

SURVEYS DESIGNATED.	BY WHOM SURVEYED.	NO.	DATE OF CONTRACT.	AMOUNT OF SURVEYS.			WHEN SURVEYED.	MEAN DECLINATION.
				Mis.	Chns.	Links.		
Sub divisions	George S. Pershin	110	July 22, 1881	11	49	08	Sept. 12, 1881	20° 30' E



The above Map of the Subdivisions of Township No. 1 South of Range No. 30½ East of the Willamette Meridian, Oregon, is strictly conformable to the Field Notes of the survey thereof on file in this Office, which have been examined and approved.

U. S. Surveyor-General's Office,

Portland, Oregon,

December 1, 1881. *James C. Holman*
Surveyor-General of Oregon.