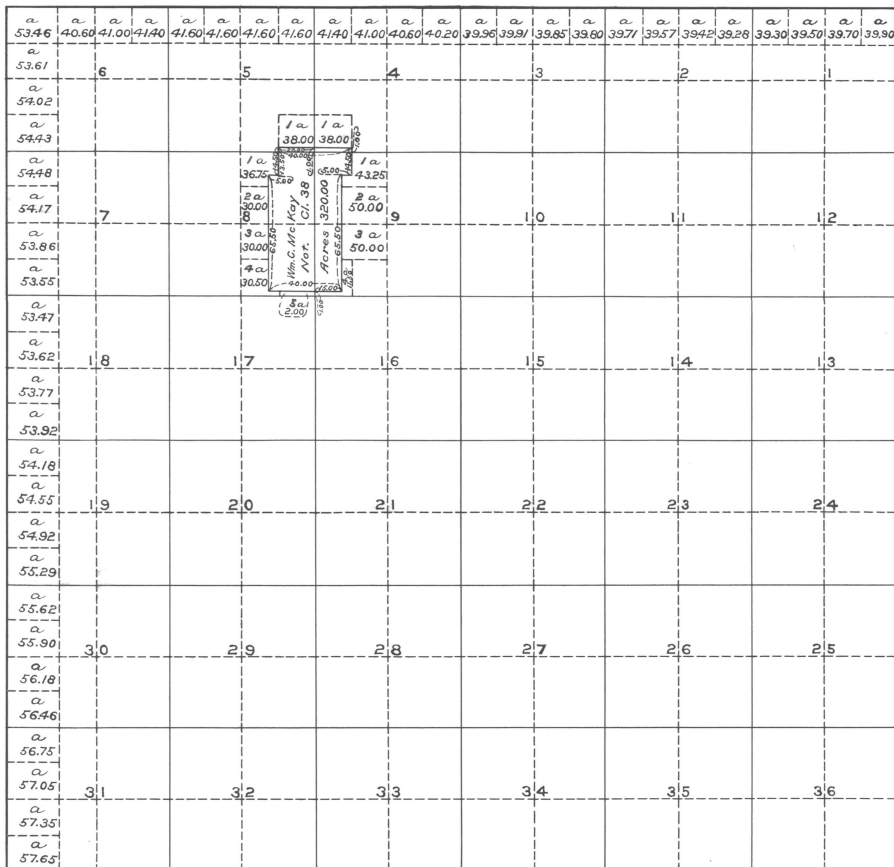


TOWNSHIP N<sup>o</sup> 2 NORTH, RANGE N<sup>o</sup> 32 EAST, WILLAMETTE MERIDIAN, OREGON.

See R 31 E. for  
Jonas Whitney  
Claim 37

Aggregate area of public lands 23086.76  
Private Surveys 320.00

Public Survey Office,  
Portland, Oregon, Nov. 2, 1931.  
I hereby certify this to be a correct copy of the  
original plat on file in this office.  
*Joseph A. Sauring*  
Office Cadastral Engineer

The above Map of the survey of Claim in Township No. 2  
North of Range No. 32 East, Willamette Meridian, Ore-  
gon, is strictly conformable to the field notes of the sur-  
veys thereof on file in this office, which have been exam-  
ined and approved.  
(Signed)  
Surveyor General's Office }  
Eugene City, Sep. 14, 1865 }  
E. L. Applegate  
Surveyor General.