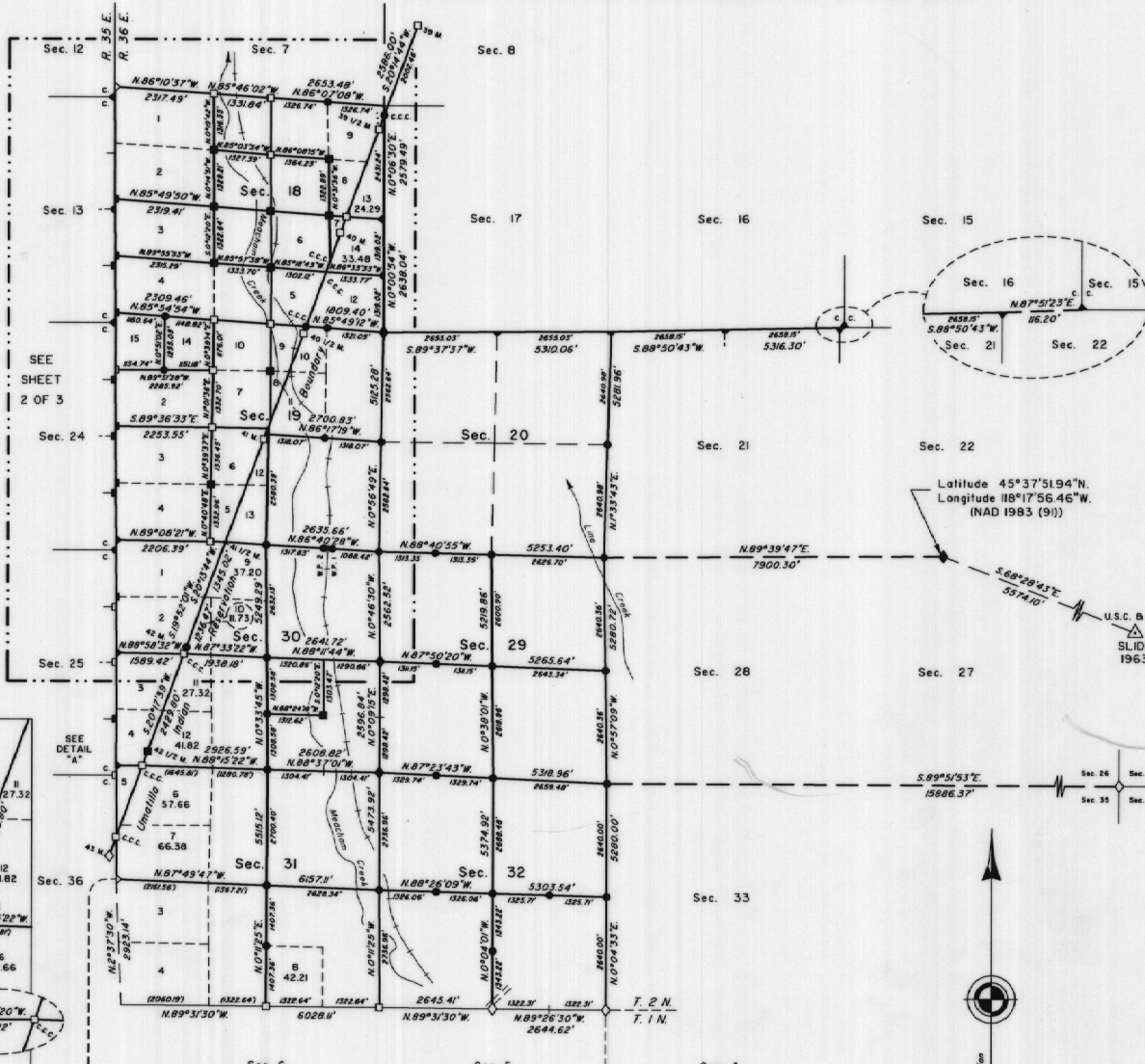


TOWNSHIP 2 NORTH, RANGE 36 EAST, OF THE WILLAMETTE MERIDIAN, OREGON

SHEET 1 OF 3

DEPENDENT RESURVEY AND SUBDIVISION OF SECTIONS



A history of surveys is contained in the field notes.

This plat represents a dependent resurvey of a portion of the Umatilla Indian Reservation boundary and a portion of the west boundary and subdivision lines, T. 2 N., R. 36 E., Willamette Meridian, Oregon, designed to restore the corners in their true original locations according to the best available evidence, and the subdivision of sections 18, 19, 29, 30, 31, and 32.

Measured distances and directions have been adjusted by Cadastral Measurement Management for Windows (WinCMM), computer software that incorporates a least squares adjustment routine. The adjusted bearings and distances are reported to the nearest second and 0.01 foot.

Except as shown hereon, the lottings and areas are as shown on the plats approved March 31, 1883, June 14, 1890, October 3, 1890 and October 29, 1921.

The survey was executed by Bryan S. Seibold, Cadastral Surveyor, beginning August 3, 1999, and completed August 15, 2002, pursuant to Special Instructions dated June 4, 1999, under Group Number 1917, Oregon.

Timber in this area consists of pine, fir, tamarack and cottonwood.

The tie to the geodetic control station is reported as mean bearing and sea level distance.

At the request of the U.S. Forest Service, the true area for each quarter-quarter section is reported for all lands under their jurisdiction. Where the true area is within 5% of the record area, the quarter-quarter section will retain its aliquot part designation even though the area changes. The quarter-quarter section will continue to be divided by legal subdivision. Where the record area changes by more than 5% or the quarter-quarter section is badly distorted, it has been assigned a lot number and may be further divided only by supplemental plat. (SEE SHEET 3 of 3)

LEGEND

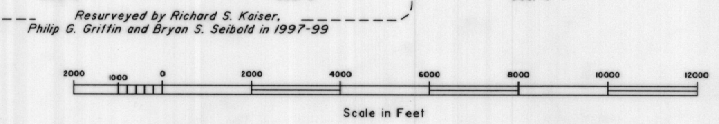
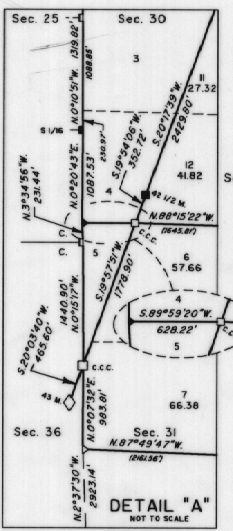
- ◆ Original corner previously monumented
- ◇ Original corner monumented this survey
- Corner previously established or reestablished
- Corner previously established or reestablished; monumented this survey
- Corner established or reestablished this survey

UNITED STATES DEPARTMENT OF THE INTERIOR
BUREAU OF LAND MANAGEMENT

Portland, Oregon September 27, 2004

This plat is strictly conformable to the approved field notes, and the survey, having been correctly executed in accordance with the requirements of law and the regulations of this Bureau, is hereby accepted.

For the Director
Mary J. M. Hartzel
Chief Cadastral Surveyor of Oregon

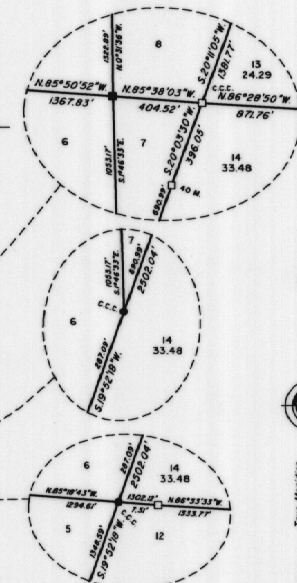
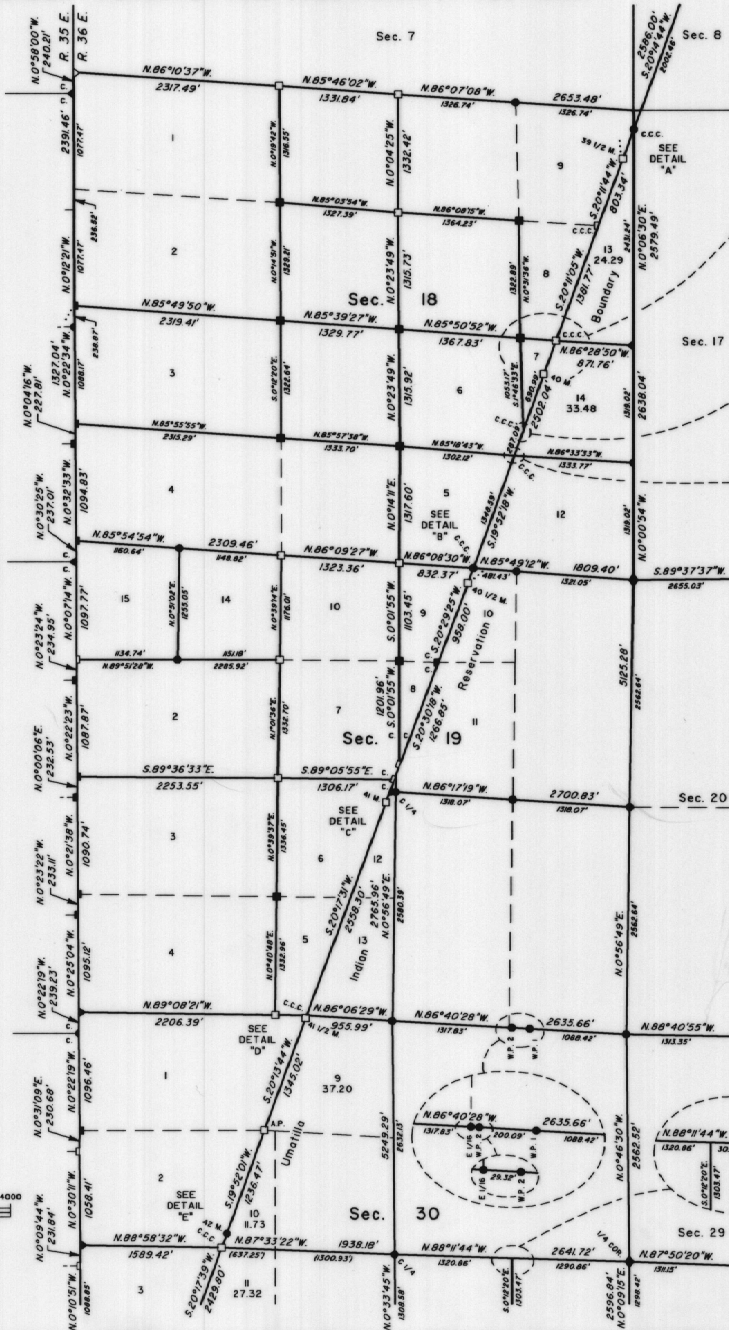
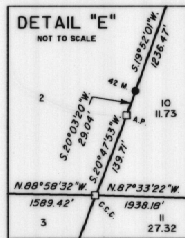
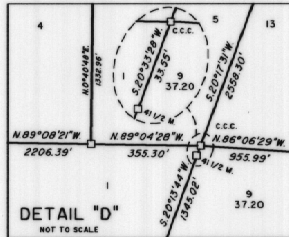
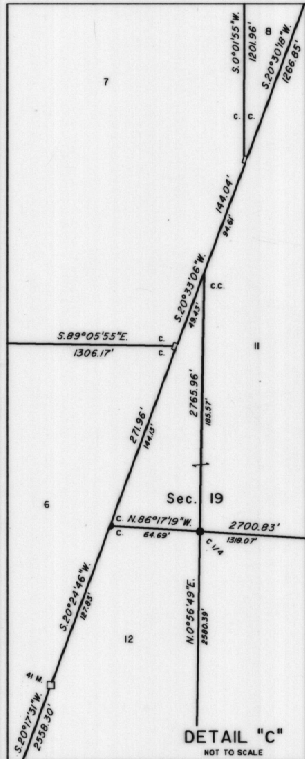
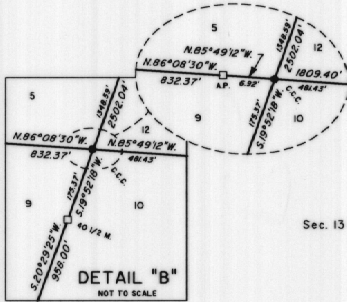
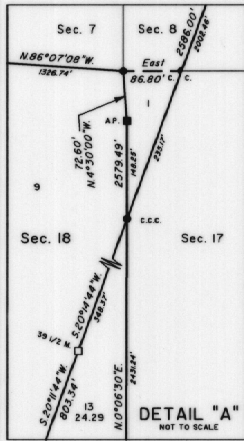


B.C.W.

TOWNSHIP 2 NORTH, RANGE 36 EAST, OF THE WILLAMETTE MERIDIAN, OREGON

SHEET 2 OF 3

DEPENDENT RESURVEY AND SUBDIVISION OF SECTIONS



Mean magnetic declination 19° East

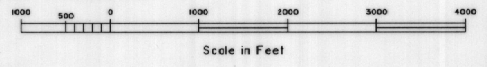
- LEGEND**
- ◊ Original corner previously remonumented
 - ◆ Original corner remonumented this survey
 - Corner previously established or reestablished
 - Corner previously established or reestablished; remonumented this survey
 - Corner established or reestablished this survey

UNITED STATES DEPARTMENT OF THE INTERIOR
BUREAU OF LAND MANAGEMENT

Portland, Oregon September 27, 2004

This plat is strictly conformable to the approved field notes, and the survey, having been correctly executed in accordance with the requirements of law and the regulations of this Bureau, is hereby accepted.

For the Director
Mary J. M. Hartzel
Chief Cadastral Surveyor of Oregon



TOWNSHIP 2 NORTH, RANGE 36 EAST, OF THE WILLAMETTE MERIDIAN, OREGON

SHEET 3 OF 3

DEPENDENT RESURVEY AND SUBDIVISION OF SECTIONS

LEGAL SUBDIVISION	OFFICIAL AREA
SECTION 19	
NE 1/4 NE 1/4	38.88 Acres
SE 1/4 NE 1/4	38.81 Acres
NE 1/4 SE 1/4	38.79 Acres
SE 1/4 SE 1/4	38.80 Acres

LEGAL SUBDIVISION	OFFICIAL AREA
SECTION 30	
SW 1/4 NE 1/4	39.57 Acres
NW 1/4 NE 1/4	39.50 Acres
NW 1/4 SE 1/4	39.45 Acres
NE 1/4 SW 1/4	39.16 Acres
SE 1/4 SW 1/4	38.54 Acres
SE 1/4 NW 1/4	38.95 Acres

LEGAL SUBDIVISION	OFFICIAL AREA
SECTION 20	
NE 1/4 NE 1/4	40.02 Acres
SE 1/4 NE 1/4	39.92 Acres
SW 1/4 NE 1/4	39.62 Acres
NW 1/4 NE 1/4	39.73 Acres
NE 1/4 SE 1/4	39.82 Acres
SE 1/4 SE 1/4	39.71 Acres
SW 1/4 SE 1/4	39.42 Acres
NW 1/4 SE 1/4	39.52 Acres
NE 1/4 SW 1/4	39.23 Acres
SE 1/4 SW 1/4	39.12 Acres
SW 1/4 SW 1/4	38.83 Acres
NW 1/4 SW 1/4	38.93 Acres
NE 1/4 NW 1/4	39.43 Acres
SE 1/4 NW 1/4	39.33 Acres
SW 1/4 NW 1/4	39.03 Acres
NW 1/4 NW 1/4	39.14 Acres

LEGAL SUBDIVISION	OFFICIAL AREA
SECTION 31	
NE 1/4 NW 1/4	40.33 Acres
SE 1/4 NW 1/4	41.55 Acres

LEGAL SUBDIVISION	OFFICIAL AREA
SECTION 32	
NE 1/4 NE 1/4	40.52 Acres
SE 1/4 NE 1/4	40.37 Acres
SW 1/4 NE 1/4	40.73 Acres
NW 1/4 NE 1/4	40.78 Acres
NE 1/4 SE 1/4	40.31 Acres
SE 1/4 SE 1/4	40.27 Acres
NE 1/4 SW 1/4	41.04 Acres
NE 1/4 NW 1/4	41.16 Acres
SE 1/4 NW 1/4	41.11 Acres

LEGAL SUBDIVISION	OFFICIAL AREA
SECTION 29	
NE 1/4 NE 1/4	39.68 Acres
SE 1/4 NE 1/4	39.79 Acres
SW 1/4 NE 1/4	39.50 Acres
NW 1/4 NE 1/4	39.39 Acres
NE 1/4 SE 1/4	39.38 Acres
SE 1/4 SE 1/4	40.09 Acres
SW 1/4 SE 1/4	39.93 Acres
NW 1/4 SE 1/4	39.82 Acres
NE 1/4 SW 1/4	39.43 Acres
SE 1/4 SW 1/4	39.70 Acres
NE 1/4 NW 1/4	39.02 Acres
SE 1/4 NW 1/4	38.97 Acres

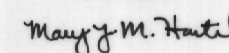
UNITED STATES DEPARTMENT OF THE INTERIOR
BUREAU OF LAND MANAGEMENT

Portland, Oregon

September 27, 2004

This plat is strictly conformable to the approved field notes, and the survey, having been correctly executed in accordance with the requirements of law and the regulations of this Bureau, is hereby accepted.

For the Director



Chief Cadastral Surveyor of Oregon