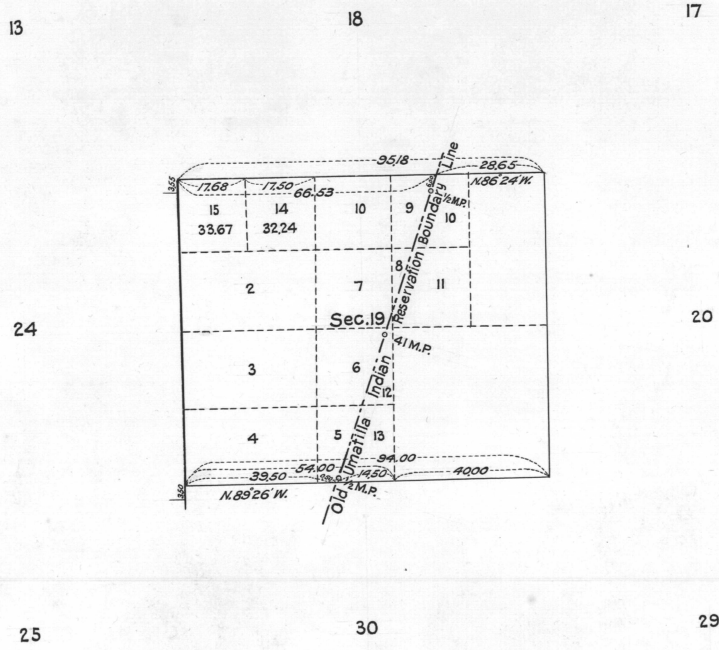


*Supplemental Plat
of
Section 19, Township No 2 North, Range No 36 East of the Willamette Meridian, Oregon.
Scale: 20 chains to an inch.*



ACCEPTED BY THE HON. COMMISSIONERS: L. O. November 9, 1921

U. S. Surveyor General's Office,
Portland, Oregon, October 29, 1921.

This supplemental plat made in order to accommodate allotments in the Unatilla Indian Reservation in Section 19, T. 2 N., R. 36 E. of the Willamette Meridian, Oregon, is prepared in accordance with instructions contained in Commissioner's letter #27 (JAD) dated October 21, 1921.

Edward J. Adams
U.S. Surveyor General of Oregon.