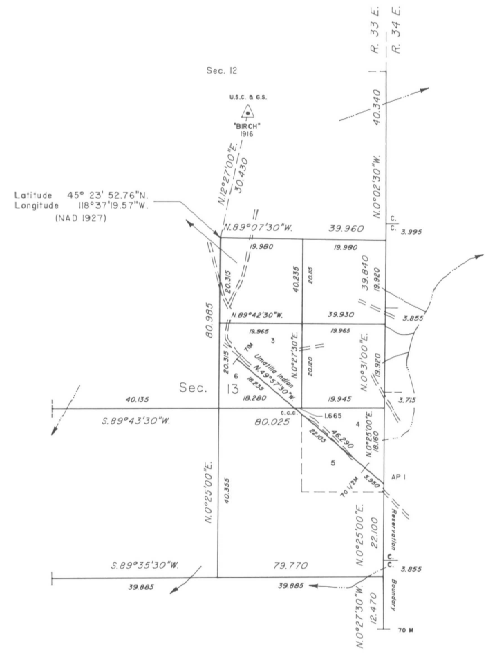


TOWNSHIP 2 SOUTH, RANGE 33 EAST, OF THE WILLAMETTE MERIDIAN, OREGON

DEPENDENT RESURVEY AND SUBDIVISION OF SECTION 13



A history of surveys is contained in the field notes.

This plat represents a dependent resurvey of a portion of the south boundary of the Umatilla Indian Reservation, a portion of the east boundary, and subdivision lines, T. 2 S., R. 33 E., Willamette Meridian, Oregon designed to restore the corners in their true original locations according to the best available evidence, and the subdivision of section 13.

The latitudes and areas are shown on the plats approved June 14, 1890 and September 20, 1892.

The survey was executed by Richard L. Johnson, Cadastral Surveyor, beginning July 28, 1987, and completed May 26, 1990 pursuant to Special Instructions dated August 22, 1986, under Group Number 1343, Oregon.

Timber in this area consists of ponderosa pine and fir.

UNITED STATES DEPARTMENT OF THE INTERIOR
BUREAU OF LAND MANAGEMENT

Portland, Oregon March 8, 1991

This plat is strictly conformable to the approved field notes, and the survey, having been correctly executed in accordance with the requirements of law and the regulations of this Bureau, is hereby accepted.

For the Director

Wayne M. Gordon
Chief Cadastral Surveyor of Oregon