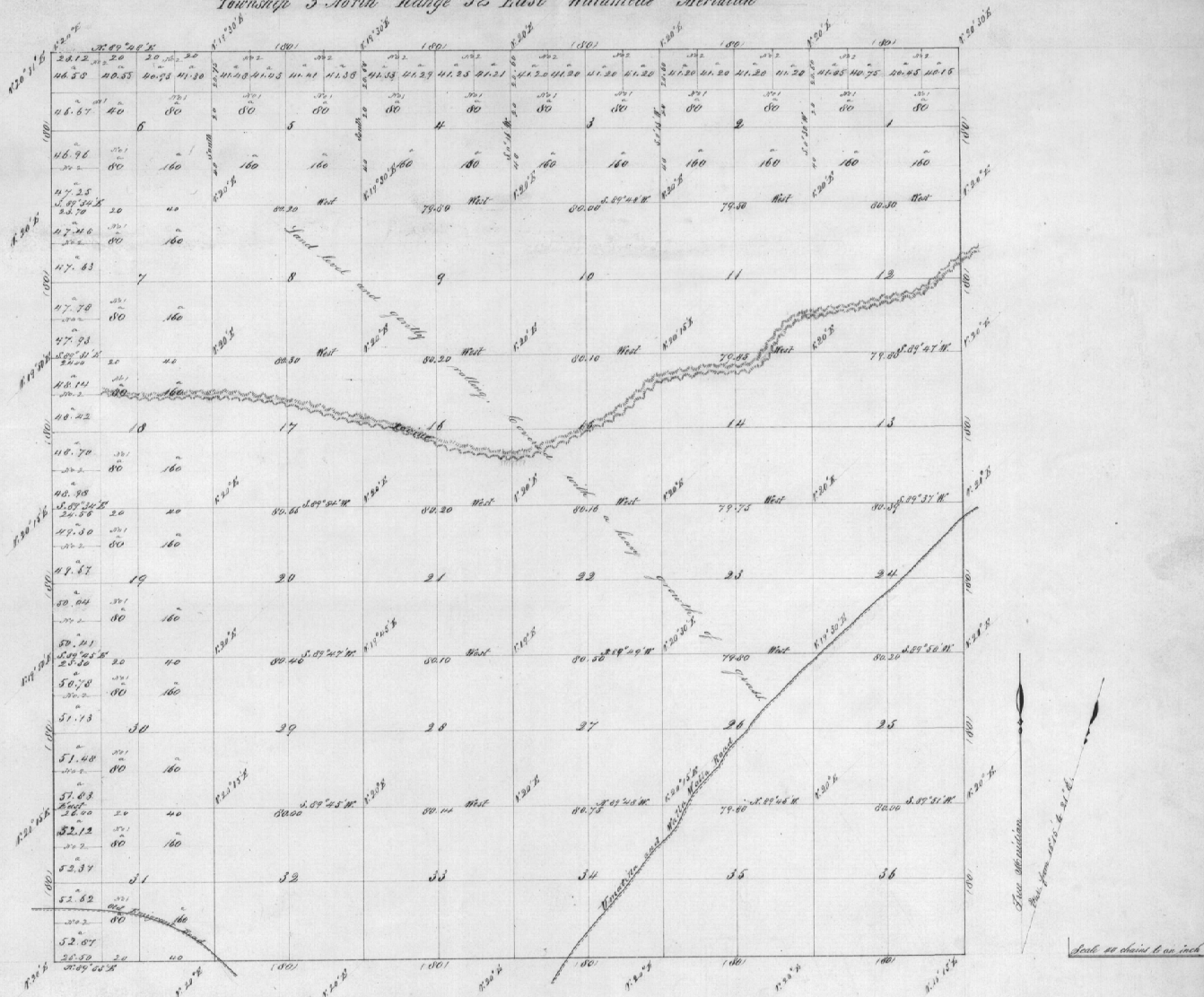


Township 3 North Range 32 East Willamette Meridian

4061



Survey Designated	By whom Surveyed	Contract No.	Contract Date	Amount of Survey Acres	When Surveyed
Subdivisions	Daniel Chapman	107	Sept. 21, 1864	60 29 69	October 29 <sup>th</sup> 1864
Total Acres 33292.72					

The above description of the Survey of Subdivisional lines in T. 3 North Range 32 East Willamette Meridian, Oregon, is strictly conformable to the field notes of the Survey kept on file in this office.  
 Surveyor General's Office  
 Eugene July, January 26<sup>th</sup> 1865

B. J. Rogers

Surveyor General of Oregon