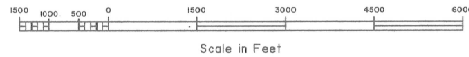
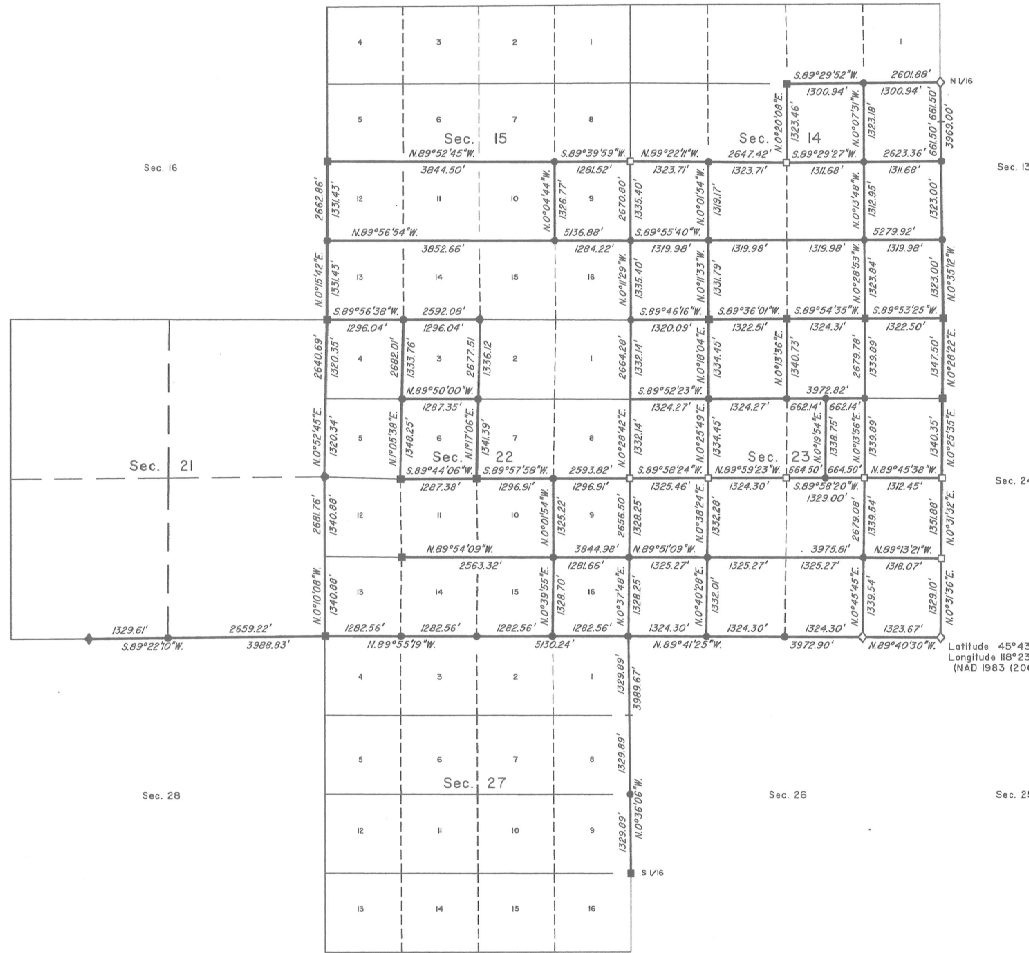


TOWNSHIP 3 NORTH, RANGE 35 EAST, OF THE WILLAMETTE MERIDIAN, OREGON

DEPENDENT RESURVEY AND SUBDIVISION OF SECTION 23

LEGAL SUBDIVISION	OFFICIAL ACRES
SECTION 14	
SW1/4 NE1/4	39.68
NE1/4 SW1/4	39.78
NW1/4 SW1/4	40.27
SW1/4 SW1/4	40.41
SE1/4 SW1/4	40.28
NE1/4 SE1/4	39.81
NW1/4 SE1/4	39.51
SW1/4 SE1/4	40.19
SE1/4 SE1/4	40.14
SECTION 15	
LOT 9	39.20
SECTION 22	
LOT 3	39.64
LOT 6	39.80
LOT 9	39.27
LOT 16	39.10
SECTION 23	
NW1/4 NE1/4	40.75
W1/2 SW1/4 NE1/4	20.36
E1/2 SW1/4 NE1/4	20.39
NE1/4 NW1/4	40.63
SE1/4 NW1/4	40.62
NE1/4 SW1/4	40.56
NW1/4 SW1/4	40.47
SW1/4 SW1/4	40.45
SE1/4 SW1/4	40.57
NW1/4 SE1/4	40.75
SW1/4 SE1/4	40.66
SE1/4 SE1/4	40.46



A history of surveys is contained in the field notes.

This plot represents a dependent resurvey of a portion of the subdivision lines, portions of the subdivision of section lines of sections 14, 15, 22, and 23, T. 3 N., R. 35 E., Willamette Meridian, Oregon, designed to restore the corners in their true original locations according to the best available evidence, and the further subdivision of a portion of section 23.

Measured distances and directions have been adjusted by computer software that incorporates a least squares adjustment routine. The adjusted bearings and distances are reported to the nearest second and 0.01 foot.

Actual quantity acreages have been returned for Federal interest lands where indicated. Changes in the official acreage of land described by aliquot part or lot number do not alter its description. Further subdivision of aliquot parts shall be in accordance with the Manual. Further subdivision of official lots may only be by supplemental plot or official survey. Official acreage and lot designations of Federal interest lands not affected by this survey are as shown on the plat approved December 17, 1855.

This survey was executed by David A. Schleich, Land Surveyor, U.S. Forest Service, beginning February 10, 2009 and completed February 25, 2010, pursuant to Special Instructions dated January 12, 2009 under Group Number 2250, Oregon.

LEGEND

- ◆ Original corner previously remonumented
- ◇ Original corner remonumented this survey
- Corner previously established or reestablished
- Corner previously established or reestablished; remonumented this survey
- Corner established or reestablished this survey
- + Corner point calculated, no monument set

UNITED STATES DEPARTMENT OF THE INTERIOR
BUREAU OF LAND MANAGEMENT

Portland, Oregon

This plot is strictly conformable to the approved field notes, and the survey, having been correctly executed in accordance with the requirements of law and the regulations of this Bureau, is hereby accepted.

For the Director

Mary J. M. Heath

Chief Cadastral Surveyor of Oregon

July 9, 2010
Date

OFFICIALLY FILED: 9/29/2010