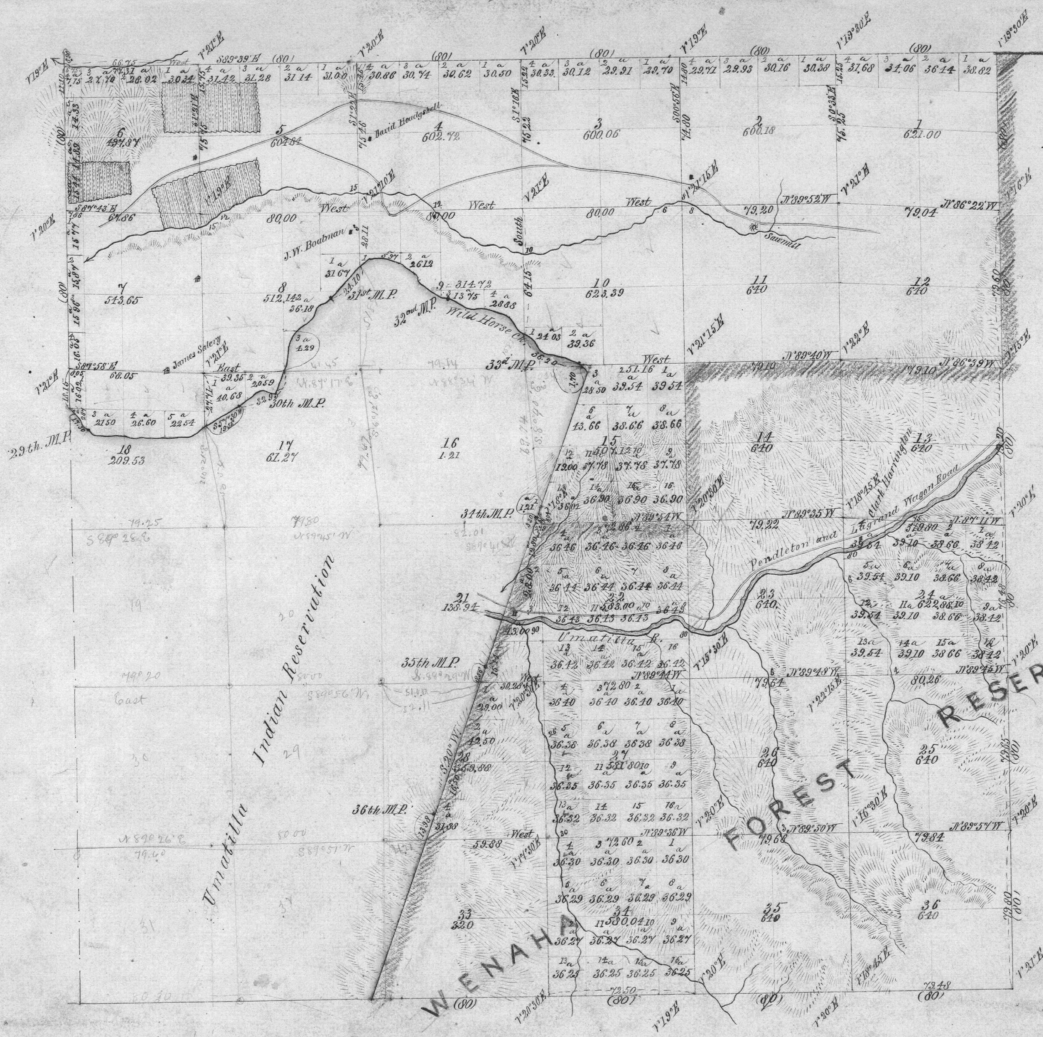


4396



Annual Description

The surface is mountainous south of Umatilla river, the ridge extend North and South, South of the U. A. the surface rises very abruptly to the height of about 1200 feet and then forms a rolling plateau with two ravines showing west, soil in Southern part is 2d and 3d rate. River bottom is marl and has a limited amount of 1st rate soil, in Northern part on flat can soil 1st and 2d rate and well adapted to farming. Secs. 1, 2, 3, 10, 11 and 12 are mostly covered with good timber, South of river timber is only found on North and N.E. hillides in ravines and along creeks, South slopes are all bare of timber but have good grass. This Township should be classed as mountainous and timbered.

Total Acres 15216.24

Scale 40 Chains to an inch.

Lines	Contractor.	Contract.		Amount Surveyed.			Commenced.	Completed.
		No.	Date	Miles.	Chains.	Links.		
Subdivisions of Reservations, etc.	George S. Perham	305	Sept 20 1878	3.9	77	00	Sept 24 1878	Oct 22 1878
			Total	4.1	72	85		
Escurtors	W. H. Odell	114	July 2 1868					

The above Map of the subdivisional lines of Township No. 3 North, Range No. 36 East, Willamette Meridian, Oregon, is strictly conformable to the original field notes of the survey thereof on file in this office, which have been examined and approved.
 U. S. Surveyor General's Office,
 Portland, Oregon.
 May 30 1879
 James R. Johnson
 Surveyor General of Oregon.