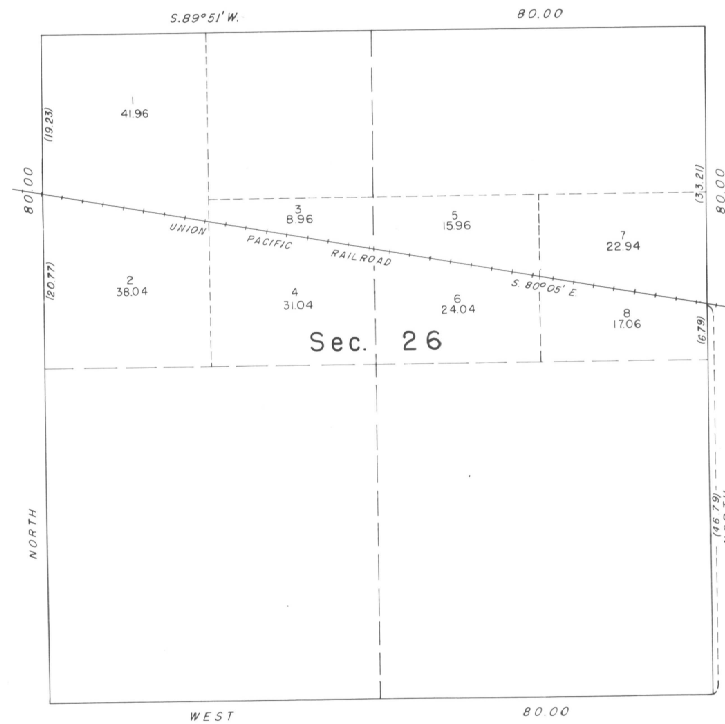


TOWNSHIP 4 NORTH, RANGE 27 EAST, OF THE WILLAMETTE MERIDIAN, OREGON.
SUPPLEMENTAL PLAT



This plat, showing amended lottings in section 26, T. 4 N., R. 27 E., Willamette Meridian, Oregon, is based upon the plat approved June 23, 1875 and other data relating to the location of the Union Pacific Railroad.

UNITED STATES DEPARTMENT OF THE INTERIOR
BUREAU OF LAND MANAGEMENT
Washington, D. C. April 20, 1959

This plat, showing amended lottings, is based upon the official records, and having been correctly prepared in accordance with the regulations, is hereby accepted.

For the Director

Earl G. Harrington
Cadastral Engineering Staff Officer